

No. NHIII/P/1/83.

Dated the 28th May, 1985

To

The Director General (Works), Central Public Works Department, Director General, Border Roads,

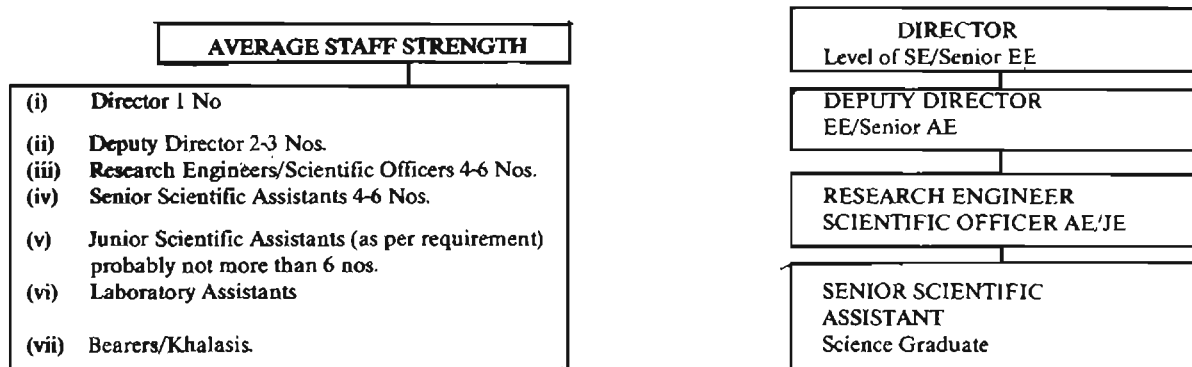
All State/Union Territories Administration Chief Engineer dealing with National Highways and Centrally sponsored Schemes

Subject:- Quality Control on National Highways and other Centrally sponsored Schemes — Staffing pattern for testing laboratories

In this Ministry's letter of even number dated 19th April 1984 detailed requirements regarding quality control measures and laboratories were brought out for adoption by the departments. Some of the Chief Engineers have suggested the details of the staff pattern for different level quality control laboratories. To maintain uniformity of the staff, a broad staffing pattern has been given in respect of the Central, Regional and Field Laboratories in the enclosed annexure. The pattern suggested is merely indicative and changes may be made keeping in view actual requirements in the department.

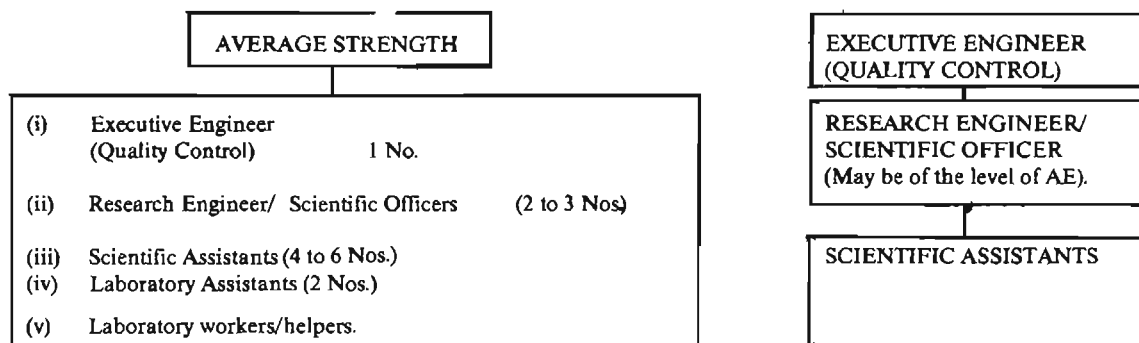
Annexure I

STAFF PATTERN FOR CENTRAL LABORATORIES
(Based on C.R.R.I's Model)



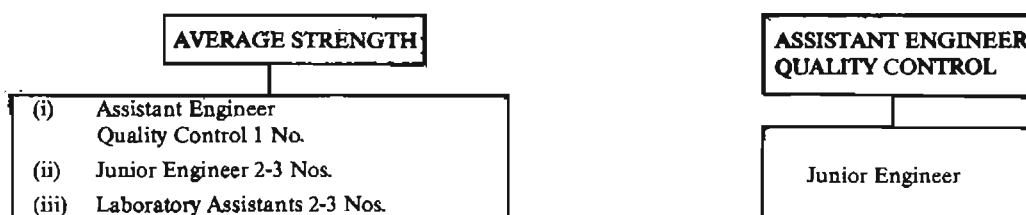
- Notes :** 1. The above said staff pattern is only indicative and may be modified for any warranted stage development and even enhanced depending upon actual work load.
2. The above said key staff may be supported by a librarian, draftsman, tracers, mechanics and drivers. There may be also appropriate staff and watch and ward staff.

STAFF PATTERN FOR REGIONAL LABORATORIES



- Notes :
1. Regional Laboratory will be dealing with specific cases, policy matters and training of staff etc. under overall guidance from the Central Laboratory.
 2. The above said staff may be modified for any warranted stage development and even may be enhanced depending upon actual work load.
 3. The above said key staff pattern is only indicative and may be supported by draftsman and drivers. There may also be appropriate watch and ward staff.

STAFF PATTERN FOR FIELD LABORATORY



- Note :
1. Depending upon the job the Field Laboratory will deal with the routine field tests at the site of the project work.