

Dated 24<sup>th</sup> July, 2024

OFFICE MEMORANDUM

**Subject:** Constitution of Expert Committee to suggest Cost-effective Long-term Remedial Measures of Landslide Prone Areas in Hilly Regions- **Seeking comments/suggestions/value addition- Regarding**

With expansion of National Highways in hill roads having Mountainous/Steep terrain involving a lot of hill cutting has resulted in landslides and destabilization of slopes, which are mitigated/protected using various methodology suggested in different guidelines.

2. Need has felt to have a matrix of site investigations to be carried out for different slope types as characterized by different geological formations, rainfall, etc as revealed from site reconnaissance survey for simple understanding of field engineers. Similarly, there is a need to have a matrix of cost-effective protection / mitigation measures to be used for different slope types as determined based on afore-mentioned site investigations. Keeping this in view, a Six-member expert committee comprising of academicians, researchers, consultants, concessionaire, technology provider and subject-matter experts was formed by Ministry of Road Transport & Highways (MoRTH) to finalize such matrices.

3. All the stakeholders of MoRT&H is requested herewith kindly send her/his comments/suggestions on enclosed "Expert Committee Report on Cost Effective Long-Term Remedial Measures of Landslide Prone Areas in Hilly Regions". Kindly send feedback to [bidurkant.jha@gov.in](mailto:bidurkant.jha@gov.in) within 15days.

(Bidur Kant Jha)

*Bidur Kant Jha*  
24/07/2024

Director

(New Technology for Highway Development)

For DG (RD) & SS

To:

1. All Stakeholders

Copy for information:

1. Sr. PPS to DG(RD)&SS
2. PPS to CE(S&R)

Copy for necessary action:

1. Director-NIC: with a request to please upload on MORT&H's website.

**EXPERT COMMITTEE REPORT ON  
COST EFFECTIVE LONG-TERM REMEDIAL MEASURES OF  
LANDSLIDE PRONE AREAS IN HILLY REGIONS**



**Submitted to**  
**Ministry of Road Transport & Highways**  
**Government of India**

**08 July 2024**

# Content

List of Figures	3
List of Tables	4
1. Introduction	6
2. Objectives	6
3. Methodology for Preparation of Matrices	7
4. Presentation of Lists and Matrices	8
5. Important Notes	8
5(a) Applicability of Matrices	9
5(b) Limitations of Matrices	9
5(c) Precautions	10
5(c) Additional Literature	10
5(d) Disclaimer	10
6. Conclusion	11
Acknowledgement	11
Vote of Thanks	11
Bibiliography	36
Annexure A1 - Steps to Use the Matrix	40
Annexure A2 – Slope Mass Rating (SMR)	44
Annexure A3 - Weathering Grades and Their Meaning	46
Annexure A4 - Back-Analysis to Determine Shear strength Parameters	47
Annexure A5 – Estimation of Safe Bearing Pressures	48
Annexure A6 – Check-list for Use in the Field during Mitigation Stage	50
Annexure A7 – Snapshots of Different Mitigation Measures from Hill Road Manual	52
Annexure A8 – Approval of All Committee Members	59

## **List of Figures**

Figure A1. Examples of Drapery Systems used for Rockfall Mitigation Measures	52
Figure A2. Typical Cross-Section of Reinforcing Rock Slope by Anchors/Bolts/Nails	53
Figure A3. Rockfall Embankment to Protect Infrastructure and Roads at the Foot of Cliff	53
Figure A4. Site Photograph of Rock Shed	54
Figure A5. Flexible Rockfall Barriers	54
Figure A6. Debris Flow Barrier	55
Figure A7. Indicative Cross-Section of Gabion Retaining Wall	55
Figure A8. Cross-Section of Reinforced Soil Slope with Flexible Facing	56
Figure A9. Cross-Section of Gabion Retaining Wall with Launching Apron on River Bed	56
Figure A10. Photograph of Gabion Retaining Wall with Launching Apron on River Bed	57
Figure A11. Cross-Section of Fabric Form Mattress with Launching Apron on River Bed	57
Figure A12. Photograph of Fabric Form Mattress with Launching Apron on River Bed	58
Figure A13. Typical Components of a Ground Anchor	58

## List of Tables

Table 1. Composition of the Committee	7
Table 2. List of Investigations	12
2(A) Site Inspection or Reconnaissance Survey (Code A)	12
2(B) Topographical Mapping (Code B)	13
2(C) Geological Investigation (Code C)	13
2(C)(i) Geological Categories	13
2(C)(ii) Rock Debris Contact Depth (Code C04)	13
2(C)(iii) Slope Assessment (Code C06)	14
2(D) Hydrological / Meteorological Investigation (Code D)	15
2(E) Geophysical Investigation	15
2(F) Geotechnical Investigation (Code F)	15
Table 3. Investigation Matrices	16
3(A) For Rock Slopes (Code A01a)	16
3(B) For Debris / Soil Slopes (Code A01b)	17
3(C) For Talus Slopes (Code A01c)	18
Table 4. List of Mitigation Measures	19
Table 5. Mitigation Matrices	26
5(A) For Rock Slopes (Code A01a)	26
5(B) For Debris / Soil Slopes (Code A01b)	30
5(C) For Talus Slopes (Code A01c)	33
5(D) For Additional Measures to Curb Instability Issues (Code A06)	34
Table A1. Slope Mass Rating Factors $F_1$ , $F_2$ , and $F_3$ (IS 13365, Part 3)	45
Table A2. Slope Mass Rating Factor $F_4$ (IS 13365, Part 3)	45
Table A3. Slope Stability Classes as per SMR Values	45
Table A4. Rock Mass Classification in Terms of Weathering	46
Table A5. Safe Bearing Pressure of Rock Mass Based on Classification (IS 12070)	48

Table A6. Net Allowable Bearing Pressure of Rock Mass Based on RMR (IS 12070)	48
Table A7. Safe Bearing Capacity Values for Different Types of Soils (IS 14458, Part 2)	49
Table A8. Typical Shear Strength Characteristics of Soils (IS 14458)	49
Table A9. Site Assessment Check-List For Field Use	50

# **EXPERT COMMITTEE REPORT ON**

## **COST EFFECTIVE LONG-TERM REMEDIAL MEASURES OF LANDSLIDE PRONE AREAS IN HILLY REGIONS**

### **1. Introduction**

With expansion of National Highways in hill roads having Mountainous/Steep terrain involving a lot of hill cutting has resulted in landslides and destabilization of slopes. There are also landslides in hill roads built several years ago. There is need of proper slope stability measures on both hill and valley side. Such kind of treatments are generally provided during project implementation or subsequently as a reactive measure to landslide.

There are several protection / mitigation measures available for stability of slopes, such as natural vegetation, rockfall barrier, surface treatments and structural treatments. Various types of investigations (topographic, geophysical, etc.) are also available to characterize the slope and accordingly, decide the type of treatment measures. Design and construction methods for different types of protection / mitigation measures are available in IRC guidelines (IRC: SP 48 – 2003 and IRC: SP 106 -2015). However there is a gap in identifying the type of investigations needed for a particular type of slope and subsequently, the selection of the type of mitigation measures for that slope. As a result, there is lack of consistency in the field investigations performed and the mitigation measures used for similar types of slope, which sometimes result in very high end structural treatments without proper justification.

For simple understanding of field engineers and consultants working for National Highway projects, it is, therefore, desirable to have a matrix of site investigations to be carried out for different slope types as characterized by different geological formations, rainfall, etc. Similarly, there is a need to have a matrix of cost-effective protection / mitigation measures to be used for different slope types as determined based on aforementioned site investigations. Keeping this in view, a Six-member committee was formed by Ministry of Road Transport & Highways (MoRTH) to finalize such matrices. The composition of the committee is given in Table 1.

### **2. Objectives**

The objectives of the committee are given below:

- (i) Preparation of matrix of different types of field investigations (i.e., Geotechnical/ Geological investigation, Geophysical investigation, Ground water investigation, etc.) required for different types of soil / rock slopes, geological formations, rainfall, landslide type, rockfall, debris flow, etc. as observed at site during visual inspection.
- (ii) Preparation of matrix of most suitable mitigation measures (such as, benching of slope, retaining wall, soil nailing, ground anchor, geosynthetic

mat, coir geotextile, jute geotextile, biotechnical slope protection, greening techniques, flexible ring net barriers, check dams, surface water drains, surface protection, subsoil drains, etc.) for different types of slope parameters based on results of field investigations.

Table 1. Composition of the Committee

Sl. No	Name	Designation	Organisation	Position in the Committee
1	Dr. J.T. Shahu	Professor	IIT Delhi	Chairman
2	Dr. P.S. Prasad	Chief Scientist	CSIR-CRRI	Member-Secretary
3	Dr. Sanjay Wakchaure	SE	MoRT&H	Member
4	Colonel Soumendra Banerjee (Veteran)	Vice President	Terre Armee	Member
5	Shri. Niraj Kumar Agarwal	AGM-1 (Design-Civil)	M/s THDC	Member
6	Shri. Sachin Joshi	VP	M/s Highway Concession One	Member

### 3. Methodology for preparation of Matrices

To prepare the matrices, the committee first prepared the following three lists:

- 1) A list of site inspection parameters
- 2) A list of type of field investigations
- 3) A list of mitigation measures

The matrices were then prepared by intercorrelation of these lists. The details of preparation of these lists and matrices are given below.

- a) **Listing of types of field investigation:** The committee members based on the diverse experiences in this field contributed valuable insights into various aspects of landslide investigations. These include root cause analysis, geological mapping, slope stability assessment, and the evaluation of human and environmental impacts. The committee also took note of the various field investigation methodologies in common practice and their efficacy.
- b) **Listing of Mitigation measures:** By pooling their collective expertise, taking reference of the mitigation measures available in the codal provision and common practices, an exhaustive list of mitigation measures was prepared. The committee deliberated in detail the efficacy of each system for various slope type and terrain.
- c) **Developing the Matrix:** For building the matrices, the slope was categorised into three types, namely, Rock Slope, Debris / Soil Slope (refer IRC: SP 106-2015) and Talus Slope (i.e., a combination of Rock and Debris Slopes). Based on this, three matrices each were prepared for both field Investigation and Mitigation measures,



making it a total of six Matrices. One special matrix was also prepared for additional mitigation measures to curb the adverse effect of instability issues.

- i) **Investigation Matrices:** These matrices have two distinct parts, namely, Site description based on visual inspection and Field investigation. Site description is based on preliminary visual inspection that gives the initial input of basic elements and field investigation is a more detailed field investigation of the affected area. Three matrices are prepared for three types of slopes (Rock, Debris/Soil and Talus) by creating various combinations of the site description parameters.
- ii) **Mitigation Matrices:** These matrices have two distinct parts, namely, site assessment and suggested mitigation measures. Three matrices are prepared for three types of slopes (Rock, Debris/Soil and Talus) by creating various combinations of site assessment parameters. Site assessment of slope shall be derived from the above-mentioned investigation matrix. One special matrix was also prepared for additional mitigation measures to curb the adverse effect of instability issues.

## 4. Presentation of Lists and Matrices

Table 2(A) presents the list of site inspection parameters to be determined by visual inspection or reconnaissance survey. Tables 2(B) to (F) shows a list of field investigations broadly classified under Topographical Mapping, Geological Investigation, Hydrological / Meteorological Investigation, Geophysical Investigation, and Geotechnical Investigation. Tables 3(A), 3(B) and 3(C) present the investigation matrices for Rock slopes, Debris/Soil slopes and Talus slopes, correlating a combination of site inspection parameters with the field investigations to be performed.

Table 4 lists the commonly used mitigation measures along with their IRC/ISO code references. Tables 5(A), 5(B) and 5(C) present the mitigation matrix for Rock slope, Debris/Soil slopes, and Talus slope, correlating a combination of slope assessment parameters determined from field investigations with the mitigation measures to be selected. Additional measures to curb special instability issues, namely, Subsidence/ Sinking, River/Scour action at toe, Road widening towards hill and valley side, Emergency Road Support and Avalanche, are given in Table 5(D).

The use of matrices (Tables 3 and 5) is self-explanatory. Still the steps to use the matrices are given in detail in Annexure A1 for clarity.

## 5. Important Notes

Important notes related to Applicability of matrices, Limitations of matrices, Precautions, Additional Literature and Disclaimer are given below.

## **a) Applicability of Matrices**

- i. The proposed matrices are applicable for rock, debris/soil, and talus slopes. The matrices shall be applicable to all regions, especially the Himalayan slopes in North and North-East India, Western Ghats, etc. It is envisaged that the combination of slope parameters covered in the matrices shall be able to cover 80-85% of slope types. In case of doubt or a different slope type, expert advice should be sought.
- ii. In general, the matrices give the mitigation measures for dry slopes. Additional mitigation measures for wet slopes (cases A04a and b) are given at the bottom of each matrix under a separate heading titled 'Additional measures to curb the adverse effect of subsurface water/flowing water over slope'. The user should first choose dry mitigation measures based on slope assessment. The user must then add wet mitigation measures (if slope is expected to have the flowing surface water or subsurface seepage water flow) to these dry mitigation measures.
- iii. Additional mitigation measures for special cases are given under other instability issues. These special cases are Subsidence/Sinking zone, Shooting stones, Toe erosion due to flowing water body, Road Widening, Emergency Works and Avalanche (refer Cases A06a-d and A06f-g in Table 2). These additional measures for special cases must be added to dry or wet mitigation measures decided earlier as explained above (refer point - ii above). Stability of unplanned muck disposal (Case A06e) should be evaluated using geotechnical slope stability analysis.
- iv. If necessary, a potential landslide site may be divided into 2 or 3 slope types based on Investigation matrix, and the corresponding mitigation measures based on mitigation matrix may be chosen, keeping aesthetics at the site in mind, to achieve overall cost savings.
- v. The above matrices can also be used for stabilisation of slope along a proposed long hill road or widening of an existing road, if it is envisaged that the slope may become unstable due to construction activities. In such cases, the existing slope along entire road stretch may be divided into 5 or 6 (or even more) slope types based on investigation matrix and the corresponding mitigation measures be chosen.

## **b) Limitations of Matrices**

- i. Once the elements of mitigation measure are chosen from the mitigation matrices, a detailed design must be carried out that may involve the use of commonly used software, such as Slide (Roc Science), Slope/w (Geo slope), Geo 5, etc. Detailed design is beyond the scope of this report.
- ii. Each slope site is unique in spite of given classification here. Accordingly, it is possible that all the elements of mitigation measures as decided based on the mitigation matrix might not be needed at some sites. On the other hand, it is also possible that some additional elements of mitigation measures might be needed. In such cases, the final decision should be taken by the relevant authorities based on expert advice / guidance.

### **c) Precautions**

- i. Some of the critical slopes may experience failure between the time of investigation and implementation of mitigation measures without any preventive measure and their geometry may get modified. Hence, during implementation of suggested measures, the geometry of slopes should again be verified.
- ii. Leaving some of the remedial measures from suggested scheme and implementing only selected ones, may have only partial benefit and may even be failure.
- iii. The cracks of various dimensions observed on the surface of the slope during investigation should be sealed immediately so as to prevent the percolation of water on the slope.
- iv. Flexible barriers / dynamic rockfall barrier require regular maintenance including removal of collected debris. If the debris is not removed periodically, the protective measures may eventually break and fail.
- v. Maintenance of drains and drainage system is another important activity to ensure that run-off water does not infiltrate into the subsoil.
- vi. Permanent observation points (Pedestals) should be established on the slopes and the movement of these points should be regularly monitored during service life (operational period) of the road, especially during rainy season through accurate surveying techniques to ensure that there is no hill slope movement.

### **d) Additional Literature**

A bibliography of chosen codes related to landslide investigation and mitigation measures from around the world (IRC, IS, ISO, BS, AASHTO, FHWA, ASTM, UNI, WSDOT, CIRIA, Hong Kong, EAD, ONR, MoRTH) is given at the end of the report. For detailed information on the subject, the reader is directed to refer to these codes. The bibliography also contains the IRC and IS codes referred in this report.

### **e) Disclaimer**

Utmost care has been taken in the preparation of matrices. However, users should take appropriate safety precautions while implementing the matrices at site. The committee bears no responsibility for any kind of losses – financial, infrastructural or human – suffered by anyone by following the matrices / guidelines given here.

## 6. Conclusion

There is crucial need for Cost-effective long-term remedial measures for landslide-prone areas in hilly regions to typically focus on sustainable solutions that mitigate the risk of landslides without imposing excessive financial burdens.

The matrices on investigation and mitigation of landslides serve as a valuable tool for field engineers by providing a structured approach to select appropriate field investigation and mitigation measures, and prioritize actions. This systematic framework not only enhances the efficiency of decision-making but also ensures that interventions are tailored to local conditions, balancing cost-effectiveness with environmental resilience and long-term sustainability. By integrating scientific investigation with practical mitigation strategies, the matrix empowers field engineers to proactively select suitable cost-effective measures to protect slopes and manage landslide hazards, ultimately safeguarding communities and infrastructure against the devastating impact of landslides.

## Acknowledgment

The committee was well supported by Shri Amninder Singh Nayyar, Geotechnical Engineer, TDHC India Limited, throughout this work. The committee gratefully acknowledges his contribution.

## Vote of Thanks

All committee members are thankful to MoRT&H for giving this wonderful opportunity.



(J.T, Shahu)

Chairman of the committee

Signed on behalf of all members

Note: Approvals from all committee members are given in Annexure A8.

## Table 2. List of Investigations

### (A) Site Inspection or Reconnaissance Survey (Code A)

During reconnaissance/site inspection, data corresponding to A01 to A07 are noted and accordingly, investigation process shall be decided.

Code	Category
A01	Slope Mass Type
A02	Slope Height
A03	Slope Angle
A04	Source of Seepage
A05	Area of Affected Slope *
A06	Other Instability Issues
A07	RoW (Right of Way) Restriction

A01 - Slope Mass Type	
A01a	Rock Slope
A01b	Debris / Soil Slope**
A01c	Talus Slope***

A02 - Slope Height	
A02a	Slope Height <60m
A02b	60m< Slope Height <100m
A02c	Slope Height >100m

A03 - Slope Angle	
A03a	Slope Angle <30°
A03b	30°< Slope Angle < 45°
A03c	45° < Slope Angle < 60°
A03d	60°< Slope Angle < 75°
A03e	75°< Slope Angle

A04 - Source Of Water Flow	
A04a	Natural Nala
A04b	Seepage through Slope in Dry Season

A06 - Other Instability Issues	
A06a	Sinking Zone
A06b	Shooting Stones
A06c	Toe Erosion due to Water Body
A06d	Road Widening
A06e	Unplanned Muck Disposal
A06f	Washed out Road (Emergency Works)
A06g	Avalanche

A07 - RoW Restriction	
A07a	RoW Restriction due to Village on Hill Side Vicinity
A07b	Row Restriction due to Forest Land on Hill Side Vicinity

Note:

\* During the reconnaissance survey, to determine the affected area of slope, details regarding its physical features such as crown, left & right flanks and toe shall be noted.

\*\* For definition of Debris / Soil slope, refer IRC: SP106 - 2015.

\*\*\* Talus slope are those slopes in which debris up to 5m thick or more are observed and rock strata lies below that.

## Table 2 (Continued). List of Investigations

### (B) Topographical Mapping\* (Code B)

Code	Category
B01	Digital/Infrared Videography; Total Station; Lidar Survey
B02	Digital Terrain Model (DTM) by Drone/UAV with or without Lidar

Note:

\* The topographical survey shall be done on the scale of 1:500 to 1:2000

### (C) Geological Investigation (Code C)

#### (i) Geological Categories

Code	Category
C01	Assessment of Slope by Analysing the Google Earth Imagery, Digital/Infrared Videography
C02	Study of Physiography and Geomorphology
C03	Study of Regional Geology
C04	Site Specific Geology**
C05	Determining the Causative Factors
C06	Slope Assessment (C06a / C06b / C06c)
C07	Geological Mapping Incorporated with Joint Data

#### (ii) Rock Debris Contact Depth\*\*\* (Code C04)

Code	Rock Debris Contact Depth
C04a	0 - 5m
C04b	5 - 10m
C04c	10 - 20m
C04d	>20m
C04e	Can't Be Interpreted (No Rock Exposure Observed)

Note:

\*\*\* For the Site-Specific Geology, the Rock Debris Contact Depth is estimated by interpolating nearby Rock-Debris Slope exposures. In case of Code C04e, Seismic Refraction test shall be conducted.

## Table 2 (Continued). List of Investigations

### (iii) Slope Assessment (Code C06)

Type Of Slope	C06a - Rock Slope		C06b - Debris Slope		C06c - Talus Slope	
	Code	Category	Code	Category	Code	Category
Determination of Strength Parameter/ Characteristics of Affected Slope Mass^	C06a (i)	SMR* Class - I	C06b (i)	Back Analysis***	C06c (i)	Back Analysis***
	C06a (ii)	SMR* Class - II				
	C06a (iii)	SMR* Class - III				
	C06a (iv)	SMR* Class - IV				
	C06a (v)	SMR* Class - V				
Weathering Characteristics of Slope**	C06a (I)	Weathering Grade - W1				
	C06a (II)	Weathering Grade - W2				
	C06a (III)	Weathering Grade - W3				
	C06a (IV)	Weathering Grade - W4				
	C06a (V)	Weathering Grade - W5				
Type of Slope Composition			C06b (I)	Debris/Soil Strata		
			C06b (II)	RBM Strata		
			C06b (III)	Glaciofluvial Strata		
Type of Failure#	C06a (α)	Planar Failure	C06b (α)	Circular Failure	C06c (α)	Translational Failure
	C06a (β)	Wedge Failure				
	C06a (γ)	Toppling Failure				

Note:

\* Refer Annexure A2.

\*\* Refer Annexure A3.

\*\*\* The process of back analysis is opted for determination of shear strength parameters, i.e. cohesion and angle of friction, of debris and talus slope mass. In back analysis, the shear strength parameters are selected from various combinations of cohesion and friction angle calculated by considering FOS = 1 for the failed slope as per engineering judgement and experience. FOS = 1 represents the state when the slope was standing just before the failure. Refer Annexure A4.

# For rock slopes, the type of failure is to be determined by geotechnical assessment of slope by kinematic analysis.

<sup>^</sup>For the design of retaining structures, Safe Bearing Capacity shall be assumed as per codal provisions. Refer Annexure A5.

## Table 2 (Continued). List of Investigations

### (D) Hydrological / Meteorological Investigation (Code D)

Code	Category
D01	Determination of Catchment Area*
D02	Determination of Peak Discharge**
D03	Determination of HFL***
D04	Analysis of Rainfall Data#

Note:

\* Delineation of catchment is done by GIS or by using toposheets provided by Survey of India.

\*\* Using the rational formula, i.e.,  $Q = C I A$ , where  $I$  = rainfall intensity and can be taken from the IMD database.

\*\*\* Determination of HFL is done (i) by River routing using HEC-RAS or any other relevant software or tool; or (ii) based on analysis of historical events.

# Rainfall data shall be analysed for those areas having annual rainfall greater than 3000 mm

### (E) Geophysical Investigation (Code E)

Code	Category
E01	Seismic Refraction Test
E02	Electrical Resistivity Test

### (F) Geotechnical Investigation (Code F)

Code	Category
F01	Borehole Drilling*

Note:

\* Geotechnical investigation (FO1) includes field work, In-situ tests and Laboratory tests. Standard Penetration Test (IS 2131-1981) shall be conducted on site. For laboratory testing, both disturbed sampling and undisturbed sampling shall be done by process of borehole drilling. Further, various laboratory tests shall be conducted for determination of engineering and index properties.



## Table 3. Investigation Matrices

### (A) For Rock Slopes (Code A01a)

Site Description Based on Inspection					Detailed Field Investigations To Be Undertaken						
Slope Height		Slope Angle	Water Flow Source		Other Instability Issues	Topographical Mapping*		Geological Investigation	Geophysical Investigation	Any Other Investigation	
A02a	+	A03				B01	+	C			
A02b	+	A03				B02	+	C			
A02c	+	A03				B02	+	C			
A02a	+	A03	+	A04b		B01	+	C	+	E02	
A02b	+	A03	+	A04b		B02	+	C	+	E02	
A02c	+	A03	+	A04b		B02	+	C	+	E02	
A02a	+	A03		+	A06c	B01	+	C		+	D
A02b	+	A03		+	A06c	B02	+	C		+	D
A02c	+	A03		+	A06c	B02	+	C		+	D

Note:

\* In case there is no accessibility for total station survey, DTM (i.e., B02) may be used even for smaller heights (< 60m).

**Table 3 (Continued). Investigation Matrices**  
**(B) For Debris / Soil Slopes (Code A01b)**

Site Description Based on Inspection					Detailed Field Investigations To Be Undertaken						
Slope Height	Slope Angle		Water Flow Source	Geological Data	Other Instability Issues	Topographical Mapping*	Geological Investigation		Geophysical Investigation	Any Other Investigation	
A02a	+	A03				B01	+	C			
A02b	+	A03				B02	+	C			
A02c	+	A03				B02	+	C			
A02a	+	A03		+	C04e	B01	+	C	+	E01	
A02b	+	A03		+	C04e	B02	+	C	+	E01	
A02c	+	A03		+	C04e	B02	+	C	+	E01	
A02a	+	A03	+	A04b		B01	+	C	+	E02	
A02b	+	A03	+	A04b		B02	+	C	+	E02	
A02c	+	A03	+	A04b		B02	+	C	+	E02	
A02a	+	A03			+	A06a	B01	+	C	+	F01
A02b	+	A03			+	A06a	B02	+	C	+	F01
A02c	+	A03			+	A06a	B02	+	C	+	F01
A02a	+	A03			+	A06b	B01	+	C		
A02b	+	A03			+	A06b	B02	+	C		
A02c	+	A03			+	A06b	B02	+	C		
A02a	+	A03			+	A06c	B01	+	C	+	D
A02b	+	A03			+	A06c	B02	+	C	+	D
A02c	+	A03			+	A06c	B02	+	C	+	D

Note:

\*In case there is no accessibility for total station survey, DTM (i.e., B02) may be used even for smaller heights (<60m).

**Table 3 (Continued). Investigation Matrices  
(C) For Talus Slopes (Code A01c)**

Site Description Based on Inspection					Detailed Field Investigations To Be Undertaken				
Slope Height	Slope Angle	Water Flow Source	Geological Data	Other Instability Issues	Topographical Mapping*	Geological Investigation	Geophysical Investigation	Any Other Investigation	
A02a	+	A03			B01	+	C		
A02b	+	A03			B02	+	C		
A02c	+	A03			B02	+	C		
A02a	+	A03	+	A04b	B01	+	C	+ E02	
A02b	+	A03	+	A04b	B02	+	C	+ E02	
A02c	+	A03	+	A04b	B02	+	C	+ E02	
A02a	+	A03		+ A06c	B01	+	C	+ D	
A02b	+	A03		+ A06c	B02	+	C	+ D	
A02c	+	A03		+ A06c	B02	+	C	+ D	

Note:

\*In case there is no accessibility for total station survey, DTM (i.e., B02) may be used even for smaller heights (<60m).

**Table 1. List of Mitigation Measures**

Broad Category	Code	Mitigation Measure	Reference*
Complete/ Partial Removal of Unstable Material	G01	a Rock Scaling	IRC SP 48: 2023 Clause No. 4.3.2 E, Page No 78
		b Offloading	IRC SP 48: 2023 Clause No. 4.3.2 D, Page No 78
		c Terrace & Benching	IRC SP 48: 2023 Clause No. 4.3.2 D & E, Page No 78
		d Bally Benching (Benching by Bamboo or Suitable Material)	IRC SP 48: 2023 Clause No. 4.3.2 G6, Page No 85
		e Hill Cutting	IRC SP 48: 2023 Clause No. 4.3.2 D, Page No 78
Sub Surface Water/High Pore Pressure	G02	a Semi Perforated PVC Pipe Wrapped with Non-Woven Geotextile	IRC SP 48: 2023 Clause No. 4.3.2 C1, Page No 73
		b Grout Curtain	IS 11293: 2018
		c Deep Trench Drain	IRC SP 48: 2023 Clause No. 4.3.2 C2, Page No 73
Erosion Control of Hill Slope	G03	a Seeding & Mulching	IRC 056 Clause 5.3 Page No. 12
		b Hydroseeding	IRC SP 48: 2023 Clause No. 4.3.2 F4, Page No 83 IRC SP 106: 2016 Clause No. 8.3.8.1 & Table 8.7, Page No. 84 & 85 IRC 056 Clause 5.5 Page No. 14
		c Vetiver Grass/ Lemon Grass Plantation	IRC 056 Clause 5.4 Page No. 12
		d Jute Geotextile	IRC SP 106: 2016 Clause No. 8.3.7.2, Page No.

Broad Category	Code	Mitigation Measure	Reference*
			83
		e Geosynthetic mats/- Erosion Control Blanket (3D mats)	IRC SP 106: 2016 Clause No. 8.3.6.1, Page No. 81 & 82; IRC SP 48: 2023 Clause No. 4.3.2, F3, Page No 83 IRC 056 Clause 5.9 Page No. 19
		f Geocell	IRC SP 48: 2023 Clause No. 4.3.2 F5, Page No 83 & 84 IRC 056 Clause 5.10 Page No. 22
		g Coir geotextile	IRC SP 106: 2016 Clause No 8.3.7.1, Page No. 82
		h Geotextile	IRC SP 59:2018 Clause No 2.2, Page No. 16
Retaining Walls/ Structures	G04	a Gabion Wall	IRC SP 48: 2023, Clause No. 4.3.3.2.1 B1 Page No. 96
		b Anchored Gabion Wall	
		c CC Gravity Wall	IRC SP 48: 2023, Clause No. 4.3.3.2.1 A4 Page No. 94 IRC SP 106: 2016, Table 8.1 & Page No. 74, Clause No. 8.3.1 & Page No. 78
		d Anchored CC Gravity Wall (Anchoring is to secure the wall)	
		e CC Gravity Wall over Raft with Bundled Anchors	
		f CC Gravity Wall over Raft with Micropile	
		g RCC Stepped Wall	

Broad Category	Code	Mitigation Measure	Reference*
		h Anchored RCC Stepped Wall	
		i CC Cladding (at Toe)	
		j Anchored CC Cladding (at Toe)	
		k CC Cladding (over Slope)	
		l Anchored CC Cladding (over Slope)	
		m CC Cladding (at Crown)	
		n Anchored CC Cladding (at Crown)	
		o Gabion Wall for Supporting Carriageway (Valley Side)	IRC SP 48: 2023, Clause No. 4.3.3.2.1 B1 Page No. 96 IRC SP 106: 2016, Clause No. 8.3.2 Page No. 79
Reinforced Soil Structures	G05	a Mechanically Stabilised Earth Wall/Reinforced soil wall or slopes	IRC SP 48: 2023, Clause No. 4.3.3.2.1 B2 Page No. 97 & 98 IRC SP 106: 2016, Table 8.1, Page No. 74 IS 18951 -2024 (Section 4 & 5)
		b Shored Mechanically Stabilised Earth Wall (shored Reinforced soil wall or slopes)	IRC SP 48: 2023, Clause No. 4.3.3.2.1 B3 Page No. 98 & 99 IS 18951 -2024 (Section 7)
Surficial Treatment	G06	a Rolled Cable Net** (steel wire ring net panels, steel wire rope net panels) with Secondary Mesh (drapery systems)	IRC SP 48: 2023, Clause No. 4.3.3.2.1 B7, Page No 106 to 108 IRC SP 106: 2016, Clause No. 8.2.2.1 Page No 76 & Table 8.3, Page No. 77 ISO 17745 & ISO 17746 IS 16014
		b Wire Mesh** (drapery systems)	
		c Double Twisted Mesh	

Broad Category	Code	Mitigation Measure	Reference*
		d Welded Wire mesh	IS 4948: 2002 ASTM A 974 - 97
		e Shotcrete	IRC SP 48: 2023, Clause No. 4.3.3.2.1 B7 (iii), Page No 108 & 109
		f Geosynthetic Cementitious Composite Mat	ASTM D8364
		g Concrete Crib Work with/ without Nails / Anchors (Japanese Crib wall)	IRC SP 48: 2023, Clause No. 4.3.3.2.1 A3 Page No. 93 IRC SP 106: 2016, Table 8.1 & Page No. 74
		h Rolled Cable Net** (steel wire ring net panels, steel wire rope net panels) with Secondary Mesh - drapery system (at Crown)	IRC SP 48: 2023, Clause No. 4.3.3.2.1 B7, Page No 106 to 108 IRC SP 106: 2016, Clause No. 8.2.2.1 Page No 76 & Table 8.3, Page No. 77 ISO 17745 & ISO 17746 IS 16014
Slope Reinforcement	G07	a Fully Grouted Solid Anchors (Passive)	IRC SP 48: 2023, Clause No. 4.3.3.2.1 B6, Page No 105 & 106 IRC SP 106: 2016, Clause No. 8.3.3, Page No. 79 & 80
		b Self Drilling Anchor (fully grouted, nominal prestress)	
		c Soil Nail (Grouted) / Rock bolt	
		d Soil Nail Driven Type	
		e Prestressed Cable Anchors	IRC SP 48: 2023, Clause No. 4.3.3.2.1 B8 (iii), Page No 109 & 110 IRC SP 106: 2016, Clause No. 8.3.4, Page No. 80 & 81

Broad Category	Code	Mitigation Measure	Reference*
River Training Structures	G08	a Articulating Grouted Concrete Mattress/ Fabric Form Mattress	IRC SP 48: 2023, Clause No. 4.3.3.2.1 B5, Page No 103 to 105
		b Gabion Revetment Mattress	IRC SP 48: 2023 Clause No. 4.3.2 F6, Page No 84 IRC SP 48: 2023, Clause No. 4.3.3.2.1 B5, Page No 101 to 103 IRC SP 116: 2018 (Section 3, 4, 5, 6 &7)
		c Gabion Spurs	IRC 89 : 2019 Clause 6
		d Concrete Spurs	
		e Tie Back Retaining Walls	IS 14458-1
Rockfall Protection Measures	G09	a Rockfall Embankment/ Bunds	IRC SP 48: 2023, Clause No. 4.3.4.1 d) Page No 114
		b Flexible / Dynamic Rockfall Barrier	IRC SP 48: 2023, Clause No. 4.3.4.1 f) Page No 115 to 117 IRC SP 106: 2016, Clause No. 8.2.2.2 Page No 77 & Table 8.4, Page No. 77 & 78 ISO 17745 & ISO 17746
		c Cut and Cover Tunnel /Rock Shed	IRC SP 48: 2023, Clause No. 4.3.4.1 e) Page No 114
		d Rock Buttress	IRC SP 48: 2023, Clause No. 4.3.4.1 a) Page No 112
		e Attenuators / Attestors	IRC SP: 106- 2015 Page No. 78 Clause 8.2.2.2
		f Canopy System	IRC SP 48: 2023, Clause No. 4.3.4.1 f) Page No 115 to 117



Broad Category	Code		Mitigation Measure	Reference*
				IRC SP 106: 2016, Clause No. 8.2.2.2 Page No 77 & Table 8.4, Page No. 77 & 78 ISO 17745 & ISO 17746
Debris Flow	G10	a	Debris Flow Barrier	IRC SP 48: 2023, Clause No. 4.3.4.2 (iv) Page No. 117 & 120 IRC SP 106: 2016, Clause No. 8.4.1, Page No. 85
		b	Gabion Anchor Block	IRC SP 42
		c	Drum Retaining Wall/Drum Anchored Diaphragm Wall	IRC SP 106: 2016, Clause No. 8.3.5, Page No. 81
		d	Check Dam/Debris Flow Basin	IRC SP 106: 2016, Clause No. 8.4.2, Page No. 86
		c	Cut and Cover Tunnel	IRC SP 48: 2023, Page No 71
Pavement	G11	a	RCC Pavement over Self Drilling Rock Anchors	
		b	RCC Pavement over Micropile	IRC SP 48: 2023, Clause No. 4.3.3.2.1 B9, Page No 110 & 111 IRC SP 106: 2016, Table No. 8.1, Page No. 7
Channelisation of Nala	G12	a	CC Channel	IRC SP 48: 2023, Clause No. 4.3.2 (B) Page No. 72 IRC SP 42
		b	Anchored CC Channel	
		c	Gabion Channel	
		d	Gabion Channel with Anchored Gabion Block	

Broad Category	Code		Mitigation Measure	Reference*
		e	Contour Drains (to prevent water from entering the treated area, given around periphery of treated area, of lean CC)	IRC SP 48, Chapter 2 Page No. 16 to 39 IRC SP 106: 2016, Clause No. 8.5, Page No. 86
Emergency Works, Avalanche Protection & Other Instabilities	G13	a	Umbrella type Slope Consolidation Structure for Road Support	IRC SP 48: 2023, Clause No. 4.3.4.2 (v) Page 117 & No. 120
		b	Umbrella type slope consolidation Structure for Avalanche Protection	IRC SP 48: 2023, Clause No.6.5 Page No. 166 & 168
		c	Articulation Form Mattress with cables for protection for toe erosion by water	IRC SP 48: 2023, Clause No.4.3.3.2.1 B5, (b) Page No. 104

Note:

\* where the year of publication of the code is not added, refer the latest update of the code.

\*\* The tensile strength of the materials shall be as per codal provisions.

1. The above suggested measures have been divided into thirteen broad categories; however, some measures given under one category may also belong to some other categories.
2. Mitigations measures other than above mentioned measures but having similar purpose may also be used.
3. Drainage system shall be provided as per site requirement and additional measures may also be provided in accordance with the guidelines of IRC: SP 42.

**Table 5. Mitigation Matrices**  
**(A) For Rock Slopes (Code A01a)**

Site Assessment Based on Investigations							Elements of Mitigation Measures to be Chosen													
A02	+	A03	+	C			G01	+	G04	+	G06	+	G07	+	G09	+	G12			
Slope Height		Slope Angle		Geology <sup>&amp;</sup>			Removal of Material		Retaining wall		Surface treatment		Slope Reinforce ment		Rock fall Protection		Drain age			
				SMR	Failure Mode	Weathering														
A02a/b	+	A03b/c/d	+	C06a (ii)			G01a													
A02a	+	A03b	+	C06a (iii)	+	C06a (α)	+	C06a (III)			G01a	+	G04j			+	G07a	+	G12e	
A02a	+	A03b	+	C06a (iii)	+	C06a (α)	+	C06a (IV)			G01a	+	G04j	+	G06f	+	G07a	+	G12e	
A02a	+	A03c	+	C06a (iii)	+	C06a (α)	+	C06a (III)			G01a	+	G04j	+	G06e	+	G07a	+	G12e	
A02a	+	A03c	+	C06a (iii)	+	C06a (α)	+	C06a (IV)			G01a	+	G04j	+	G06e	+	G07a	+	G12e	
A02a	+	A03d/e	+	C06a (iii)	+	C06a (α)	+	C06a (III)			G01a	+	G04j	+	G06a	+	G07a			
A02a	+	A03d/e	+	C06a (iii)	+	C06a (α)	+	C06a (IV)			G01a	+	G04j	+	G06a	+	G07a			
A02a	+	A03b	+	C06a (iii)	+	C06a (β)					G01a				+	G06g				
A02a	+	A03c	+	C06a (iii)	+	C06a (β)					G01a	+	G04c	+	G06a	+	G07b	+	G12e	
A02a	+	A03d/e	+	C06a (iii)	+	C06a (β)					G01a	+	G04d	+	G06a	+	G07b			
A02a	+	A03c	+	C06a (iii)	+	C06a (γ)	+	C06a (III)			G01a	+	G04m	+	G06e	+	G07a	+	G12e	
A02a	+	A03c	+	C06a (iii)	+	C06a (γ)	+	C06a (IV)			G01a	+	G04n	+	G06e	+	G07b	+	G12e	
A02a	+	A03d	+	C06a (iii)	+	C06a (γ)	+	C06a (III)			G01a	+	G04m	+	G06e	+	G07a			
A02a	+	A03d	+	C06a (iii)	+	C06a (γ)	+	C06a (IV)			G01a	+	G04n	+	G06a	+	G07b			
A02a	+	A03e	+	C06a (iii)	+	C06a (γ)	+	C06a (III) / (IV)			G01a	+	G04n	+	G06a	+	G07b			
A02a	+	A03c/d/e	+	C06a (iv)	+	C06a (α)					G01a	+	G04j	+	G06a	+	G07a	+	G12e	

Site Assessment Based on Investigations							Elements of Mitigation Measures to be Chosen										
A02	+	A03	+	C			G01	+	G04	+	G06	+	G07	+	G09	+	G12
Slope Height		Slope Angle		Geology <sup>&amp;</sup>			Removal of Material		Retaining wall		Surface treatment		Slope Reinforce ment		Rock fall Protection		Drain age
				SMR	Failure Mode	Weathering											
A02a	+	A03c/d/e	+	C06a (iv)	+	C06a (β)	G01a	+	G04d	+	G06a	+	G07b			+	G12e
A02a	+	A03c/d/e	+	C06a (iv)	+	C06a (γ)	G01a	+	G04l								
A02a	+	A03c	+	C06a (v)	+	C06a (α)	G01a	+	G04d	+	G06a	+	G07a			+	G12e
A02a	+	A03c	+	C06a (v)	+	C06a (β)	G01a	+	G04h	+	G06a	+	G07b			+	G12e
A02b	+	A03b	+	C06a (iii)	+	C06a (α) + C06a (III)	G01a	+	G04i	+	G06e	+	G07a			+	G12e
A02b	+	A03b	+	C06a (iii)	+	C06a (α) + C06a (IV)	G01a	+	G04i	+	G06f	+	G07b			+	G12e
A02b	+	A03c	+	C06a (iii)	+	C06a (α) + C06a (III)	G01a	+	G04i	+	G06e	+	G07a			+	G12e
A02b	+	A03c	+	C06a (iii)	+	C06a (α) + C06a (IV)	G01a	+	G04j	+	G06a	+	G07b			+	G12e
A02b	+	A03d/e	+	C06a (iii)	+	C06a (α) + C06a (III)	G01a	+	G04j	+	G06a	+	G07a				
A02b	+	A03d/e	+	C06a (iii)	+	C06a (α) + C06a (IV)	G01a	+	G04j	+	G06a	+	G07b				
A02b	+	A03b/c	+	C06a (iii)	+	C06a (β)	G01a	+	G04d/j*	+	G06a	+	G07b			+	G12e
A02b	+	A03d/e	+	C06a (iii)	+	C06a (β)	G01a	+	G04d/j	+	G06a	+	G07b				
A02b	+	A03c	+	C06a (iii)	+	C06a (γ) + C06a (III)/(IV)	G01a	+	G04m	+	G06e	+	G07a			+	G12e
A02b	+	A03d/e	+	C06a (iii)	+	C06a (γ) + C06a (III)/(IV)	G01a	+	G04n	+	G06a	+	G07b		G09c/f		
A02b	+	A03c/d/e	+	C06a (iv)	+	C06a (α)	G01a	+	G04j	+	G06a	+	G07a		G09c/f		
A02b	+	A03c/d/e	+	C06a (iv)	+	C06a (β)	G01a	+	G04d	+	G06a	+	G07b				
A02b	+	A03c/d/e	+	C06a (iv)	+	C06a (γ)	G01a	+	G04l								
A02a/b	+	A03c/d/e	+	C06a (v)	+	C06a (α)/(β)/(γ) + C06a (V)	G01c	+	G04d/j	+	G06a	+	G07b	+	G09b/e		

Site Assessment Based on Investigations						Elements of Mitigation Measures to be Chosen														
A02	+	A03	+	C		G01	+	G04	+	G06	+	G07	+	G09	+	G12				
Slope Height		Slope Angle		Geology <sup>&amp;</sup>		Removal of Material		Retaining wall		Surface treatment		Slope Reinforce ment		Rock fall Protection		Drain age				
				SMR	Failure Mode Weathering															
A02c	+	A03	+	C06a (iii)	+	C06a (α)/(β)		G01a	+	G04d	+	G06h	+	G07a	+	G09a/b/ e/f				
A02c	+	A03 c/d/e		+	C06a (iii)	+	C06a (γ)	+	C06a (III)/(IV)					G01a	+	G04d+ G04n <sup>#</sup>			+	G09b/e
A02c	+	A03c/d/e		+	C06a (iv)	+	C06a (α)/(β)/(γ)					G01a	+	G04d/j	+	G06a	+	G07b	+	G09b/e
A02c	+	A03c/d/e		+	C06a (v)	+	C06a (α)/(β)/(γ)					G01a	+	G04d/j	+	G06h	+	G07b	+	G09b/e

Additional Measures to Curb the Adverse Effect of Subsurface Water/Flowing Water over Slope											
A02 + A03 + A04 + C						G01 + G02 + G12					
Slope Height		Slope Angle		Seepage Source		Removal of Material		Perforated pipes		Channelisation of Nala	
A02		+		A03a		A04a				+ G12a	
A02		+		A03b		A04a				+ G12a	
A02		+		A03c		A04a				+ G12b	
A02		+		A03d		A04a				+ G12b	
A02		+		A03		A04b		+ G02a			

Additional Measures for Shooting Stone Condition^															
A02		+	A03		+	A04		+	A06		+	C		G09	
Slope Height			Slope Angle			Seepage Source			Shooting Stone			Geology		Rockfall Protection Measures	
A02		+	A03						A06b					G09a**/G09b/G09c/G09e/G09f	

Note:

&In cases where a site assessment factor is not written, it indicates that the particular factor is not a deciding factor for choosing mitigation measures.

\* / sign inside cell indicates that one of the two measures are to be chosen. For e.g., G04d/j indicates that either G04d or G04j is to be chosen.

#plus inside cell indicates both mitigation measures are to be chosen. For e.g., G04d+G04n indicates that both G04d and G04n are to be chosen.

\*\*G09a – Rockfall Embankment shall only be chosen for the locations having sufficient Road Width

^For the case - Slope height greater than 100m and Shooting Stone, ceasing of instability at crown and provision of rockfall barrier system is suggested as Cost Effective Solution. Ceasing of instability at crown can be done by provision of Anchored CC Cladding at Crown or provision of rolled cable net + self-drilling anchors.

## Table 5. Mitigation Matrices

### (B) For Debris / Soil Slopes (Code A01b)

Site Assessment Based on Investigations					Elements of Mitigation Measures to be Chosen															
A02	+	A03	+	A07	C06	G01	+	G03	+	G04	+	G05	+	G06	+	G07	+	G12		
Slope Height		Slope Angle		RoW	Slope Composition	Removal of Material		Erosion Control		Retaining Wall*		Reinforced Structures*		Surface Treatment		Slope Reinforcement		Drainage		
A02	+	A03a		+	C06b (I)															
A02a	+	A03b		+	C06b (I)	G01d**	+	G03a/c											+	G12e
A02a	+	A03b		+	C06b (I)	G01b	+	G03	+	G04a						+	G07d	+	G12e	
A02a	+	A03c		+	C06b (I)	G01c	+	G03a+G06g/d	+	G04a				+	G06c	+	G07d	+	G12e	
A02a	+	A03d		+	C06b (I)	G01c	+	G03b+G06e	+	G04e/f				+	G06b	+	G07d	+	G12e	
A02b/c	+	A03b		+	C06b (I)	G01b	+	G03	+	G04a*	G05a/b*	+	G06b/d	+	G07d	+	G12e			
A02b/c	+	A03c		+	C06b (I)	G01c	+	G03a+G03g/d	+	G04a*	G05a/b*	+	G06b/d	+	G07d	+	G12e			
A02b/c	+	A03d		+	C06b (I)	G01c	+	G03b+G03e	+	G04e/f*	G05b*	+	G06b/d	+	G07b	+	G12e			
A02	+	A03b	+	A07	+	C06b (I)	G01b	+	G03a/c	+	G04a*	G05b*	+	G06b/d	+	G07d	+	G12e		
A02	+	A03c	+	A07	+	C06b (I)	G01b	+	G03b	+	G04e/f*	G05b*	+	G06b/d	+	G07d	+	G12e		
A02	+	A03d	+	A07	+	C06b (I)	G01b	+	G03b+G03e	+	G04e/f*	G05b*	+	G06b/d	+	G07b	+	G12e		
A02	+	A03b		+	C06b (II)	G01b	+	G03a+G03d	+	G04d*	G05b*	+	G06b/d	+	G07b	+	G12e			
A02	+	A03c		+	C06b (II)	G01b	+	G03b+G03e	+	G04d*	G05b*	+	G06b/d	+	G07b	+	G12e			
A02	+	A03d		+	C06b (II)	G01c	+	G03a+G03d	+	G04e/f*	G05b*	+	G06b/d	+	G07b	+	G12e			
A02	+	A03e		+	C06b (II)	G01c	+	G03b+G03e	+	G04e/f				+	G06a	+	G07b	+		
A02	+	A03b/c	+	A07	+	C06b (II)	G01b	+	G03a+G03d	+	G04d*	G05b*	+	G06b/d	+	G07b	+	G12e		
A02	+	A03d/e	+	A07	+	C06b (II)	G01b	+	G03b+G03e	+	G04d*	G05b*	+	G06b/d	+	G07b	+	G12e		

Site Assessment Based on Investigations					Elements of Mitigation Measures to be Chosen													
A02	+	A03	+	A07	C06	G01	+	G03	+	G04	+	G05	+	G06	+	G07	+	G12
Slope Height		Slope Angle		RoW	Slope Composition	Removal of Material		Erosion Control		Retaining Wall*		Reinforced Structures*		Surface Treatment		Slope Reinforcement		Drainage
A02a	+	A03b/c		+	C06b (III)	G01b				+	G04e/f		+	G06a	+	G07b	+	G12e
A02a	+	A03d		+	C06b (III)	G01b				+	G04e/f		+	G06a	+	G07b	+	G12e
A02a	+	A03e		+	C06b (III)	G01b				+	G04e/f		+	G06a	+	G07b	+	G12e
A02b/c	+	A03b/c		+	C06b (III)	G01b				+	G04e/f/g*	G05a/b*	+	G06a	+	G07b	+	G12e
A02b/c	+	A03d		+	C06b (III)	G01b				+	G04e/f/g*	G05a/b*	+	G06a	+	G07b/G07e	+	G12e
A02b/c	+	A03e		+	C06b (III)	G01b				+	G04e/f/g		+	G06a	+	G07b/G07e	+	G12e

Additional Measures to Curb the Adverse Effect of Subsurface Water / Flowing Water Over Slope												
A02	+	A03	+	A04	+	C06	G02		+	G10	+	G12
Slope Height		Slope Angle		Seepage Source		Slope Composition		Perforated pipes		Debris Flow Barrier		Channelisation of Nala
A02	+	A03b/c	+	A04a	+	C06b					+	G12c
A02	+	A03d/e	+	A04a	+	C06b					+	G12d
A02	+	A03	+	A04b	+	C06b	G02a		+	G10a	+	

Additional Measures to Curb the Adverse Effect of Surface Flowing Water along with Debris Over Slope																		
A02		+	A03		+	A04		+	C		G02	+	G10		+	G12		
Slope Height			Slope Angle			Seepage Source			Slope Composition		Perforated pipes			Debris Flow Barrier			Channelisation of Nala	
A02		+	A03b/c		+	A04a		+	C06b					G10b			G12c	
A02		+	A03d/e		+	A04a		+	C06b					G10a			G12d	

Note:

\* While retaining walls (Code G04) are useful for hill side stabilisation, Reinforced soil structures (Code G05) are recommended for valley side construction. Mechanically Stabilised Earth Walls (Code G05a) are useful for locations where formation has breached and there is limitation on hill side cutting due to RoW or vulnerable slope on hill side. Reinforced wall shoring (Code G05b) is suitable at places with excessive settlement and where sufficient foundation width is not available.



**\*\* The provision of bally benching shall be suggested in the locations situated in the areas having annual rainfall greater than 3000 mm.**

Reinforcing material shall be indigenous and readily available.

1. If affected slope mass comprises of combination of exposed debris and rock surface, in those cases, investigation and design shall be combination of each slope type.
2. Provision of Off-loading shall be suggested as the per site requirement.
3. For site having high seepage water and installation of semi perforated pipe seems to be ineffective and there is no RoW restriction, in those cases, grout curtain (G02b) on uphill side may be suggested.

**Table 5. Mitigation Matrices**  
**(C) For Talus Slopes (Code A01c)**

Site Assessment Based on Investigations									Elements of Mitigation Measures to be Chosen										
A02	+	A03	+	A07	+	C04	+	C06	G01	+	G03	+	G04	+	G06	+	G07	G12	
Slope Height		Slope Angle		RoW		Rock Debris Contact Depth		Slope Assessment	Removal of Material		Erosion Control		Retaining Wall		Surface Treatment		Slope Reinforcement	Drainage	
A02	+	A03a			+	C04		C06c	G01b	+	G03c								
A02	+	A03b			+	C04		C06c	G01b	+	G03a/d	+	G04c	+	G06a	+	G07b	+	G12e
A02	+	A03c			+	C04		C06c	G01b	+	G03a/g	+	G04d	+	G06a	+	G07b	+	G12e
A02	+	A03d/e			+	C04		C06c	G01b	+	G03b/e	+	G04e	+	G06a	+	G07b	+	G12e
A02	+	A03d/e	+	A07	+	C04		C06c	G01b	+	G03b/e	+	G04e	+	G06a	+	G07b	+	G12e

Additional Measures to Curb the Adverse Effect of Subsurface Water / Surface Flowing Water Over Slope																		
A02		+	A03		+	A04		+	C		G02	+	G10		+	G12		
Slope Height			Slope Angle			Seepage Source			Slope Composition		Perforated pipes			Debris Flow Barrier			Channelisation of Nala	
A02		+	A03a/b		+	A04a		+	C06c		G12c							
A02		+	A03c/d/e		+	A04a		+	C06c		G12d							
A02		+	A03		+	A04b		+	C06c		G02a							

Additional Measures to Curb the Adverse Effect of Surface Flowing Water along with Debris Over Slope																		
A02		+	A03		+	A04		+	C		G02	+	G10		+	G12		
Slope Height			Slope Angle			Seepage Source			Slope Composition		Perforated pipes			Debris Flow Barrier			Channelisation of Nala	
A02		+	A03a/b		+	A04a		+	C06c					G10b			G12c	
A02		+	A03c/d/e		+	A04a		+	C06c					G10a			G12d	

Note:

If affected Slope Mass comprises of combination of exposed Debris and Rock surface, in those cases, Investigation and Design shall be a combination of each Slope type.

## Table 5. Mitigation Matrices

### (D) For Additional Measures to Curb Instability Issues (Code A06)

#### (i) Sinking

ADDITIONAL MEASURES TO BE SUGGESTED TO CURB THE EFFECTS SINKING							
A02	+	A03	+	A06	G01	+	G02 + G04 + G11
Slope Height		Slope Angle		Instability issue	Removal of Material	Erosion Control	Retaining Wall Pavement
A02	+	A03	+	A06a		G02a + G04e+G04o	+ G11a/ G11b

Note:

1. Consolidation grouting is also recommended in the sinking zone to reclaim finer particle loss.

#### (ii) River Action at Valley Toe

ADDITIONAL MEASURES TO BE SUGGESTED TO CURB THE EFFECT OF RIVER ACTION AT VALLEY TOE							
A02	+	A03	+	A06	+	C	G01 + G04 + G08
Slope Height		Slope Angle		Instability issue		Slope Assessment	Removal of Material Retaining Wall River Training Structures
A02	+	A03	+	A06c	+	C06a	G04j + G08a+G08d
A02	+	A03	+	A06c	+	C06b	G04e + G08a+G08b+G08c

#### (iii) Road Widening towards Hill Side

ADDITIONAL MEASURES TO BE SUGGESTED FOR ROAD WIDENING – HILL SIDE									
A02	+	A03	+	A06	+	A07	+	C	G01 + G04 + G06 + G07
Slope Height		Slope Angle		Instability Issue		RoW		Slope Assessment	Removal of Material Retaining Wall Surface Treatment Slope Reinforcement
A02		A03		A06d	+	A07	+	C06a	G01e G04j G06a + G07b
A02		A03		A06d	+	A07	+	C06b	G01e G04b G06a + G07b
A02		A03		A06d	+	A07	+	C06c	G01e G04d G06a + G07b

**(iv) Road Widening towards Valley Side**

ADDITIONAL MEASURES TO BE SUGGESTED FOR ROAD WIDENING – VALLEY SIDE																			
A02		+	A03		+	A06		+	A07		+	C		G01		+	G05		
Slope Height			Slope Angle			Instability Issue			RoW			Geology			Removal of Material			Reinforced Structure	
						A06d											+	G05a/b	

**(vi) Emergency Road Support**

ADDITIONAL MEASURES TO BE SUGGESTED FOR EMERGENCY ROAD SUPPORT																	
A02		+	A03		+	A06		G01		+	G13						
Slope Height				Slope Angle				Instability Issue				Removal of Material				Emergency Works	
								A06f								G13a	

Note:

1. Suggested measure is temporary solution and shall be suggested in case of emergency works

**(vii) Avalanche**

ADDITIONAL MEASURES TO BE SUGGESTED FOR AVALANCHE								
A02	+	A03	+	A06		G01	+	G13
Slope Height		Slope Angle		Instability Issue		Removal of Material		Emergency Works
				A06g				G13b

## Bibliography

1. IS 10270. "Guidelines for Design and Construction of Prestressed Rock Anchors", *Bureau of Indian Standards, New Delhi*.
2. IS 11309. "Method of conducting pull-out test on anchor bars and rock bolts", *Bureau of Indian Standards, New Delhi*.
3. IS 12070. "Design and Construction of Shallow Foundations on Rocks", *Bureau of Indian Standards, New Delhi*.
4. IS 14458 Part 1. "Retaining wall for Hill Area-Guideline-Selection of type of Wall" *Bureau of Indian Standards, New Delhi*.
5. IS 14458 Part 2. "Retaining wall for Hill Area-Guideline-Design of Retaining/Breast Walls" *Bureau of Indian Standards, New Delhi*.
6. IS 14458 Part 3. "Retaining wall for Hill Area-Guideline-Construction of Dry-Stone Walls" *Bureau of Indian Standards, New Delhi*.
7. IS 14458 Part 4. "Retaining wall for Hill Area-Guideline-Construction of Banded Dry-Stone Walls" *Bureau of Indian Standards, New Delhi*.
8. IS 14458 Part 5. "Retaining wall for Hill Area-Guideline-Construction of Cement Stone Walls" *Bureau of Indian Standards, New Delhi*.
9. IS 14458 Part 6. "Retaining wall for Hill Area-Guideline-Construction of Gabion Walls" *Bureau of Indian Standards, New Delhi*.
10. IS 4958: 2002. "Welded Steel Wire Fabric for General Use — Specification", *Bureau of Indian Standards, New Delhi*.
11. IS 14680. "Landslide Control Guidelines", *Bureau of Indian Standards, New Delhi*.
12. IS 15872. "Application of Coir Geotextiles (Coir Woven bhoovasthra) for Rainwater Erosion Control in Roads, Railway Embankments and Hill Slopes – Guidelines", *Bureau of Indian Standards, New Delhi*.
13. IS 16014. "Mechanically Woven, Double-Twisted, Hexagonal Wire Mesh Gabions, Revet Mattresses, Rock Fall Netting and Other Products for Civil Engineering Purposes (Galvanized Steel Wire or Galvanized Steel Wire with Polymer Coating)", *Bureau of Indian Standards, New Delhi*.
14. IS 16098 Part 2. "Structured-Wall Plastics Piping Systems for Non-Pressure Drainage and Sewerage - Specification, Pipes and Fittings with Non-Smooth External Surface", *Bureau of Indian Standards, New Delhi*.
15. IS 18591-2024. "Geosynthetic Reinforced Soil Structures — Code of Practice", *Bureau of Indian Standards, New Delhi*.
16. IRC HRB 15. "State of the Art: Landslide correction Techniques", *Indian Road Congress, New Delhi*.
17. IRC HRB 23. "State of Art: Design and Construction of Rockfall Mitigation Systems", *IRC Highway Research Board, New Delhi*.
18. IRC 34. "Guidelines on Recommendations for Road Construction in Areas Affected by Water Logging, Flooding and/or Salts Infection", *Indian Road Congress, New Delhi*.

19. IRC SP 19. "Manual for Survey, Investigation and Preparation of Road Projects, *Indian Road Congress, New Delhi*.
20. IRC SP 42. "Guidelines on Road Drainage", *Indian Road Congress, New Delhi*.
21. IRC SP 48. "Hill Road Manual", *Indian Road Congress, New Delhi*.
22. IRC 56. "Guidelines on Recommended Practices for Treatment of Embankment and Roadside Slopes for Erosion Control", *Indian Road Congress, New Delhi*.
23. IRC SP 59. "Guidelines for Use of Geosynthetics in Road Pavements and other Associated Works", *Indian Road Congress, New Delhi*.
24. IRC SP 73. "Manual of Standards and Specifications for Two Laning of State Highways on B.O.T. Basis", *Indian Road Congress, New Delhi*.
25. IRC 75. "Guidelines for the Design of High Embankments", *Indian Road Congress, New Delhi*.
26. IRC 78. "Specifications and Code of Practice for Road Bridges-Section –VII-Foundations and Substructures", *Indian Road Congress, New Delhi*.
27. IRC 89. "Guidelines for Design and Construction of River Training and Control Works for Road Bridges", *Indian Road Congress, New Delhi*.
28. IRC SP 80. "Corrosion Prevention", *Indian Road Congress, New Delhi*.
29. IRC SP 102. "Guidelines for the Design and Construction of Reinforced Soil Walls", *Indian Road Congress, New Delhi*.
30. IRC SP 106. "Engineering Guidelines on Landslide Mitigation Measures for Indian Roads", *Indian Road Congress, New Delhi*.
31. IRC SP 109. "Guidelines for Design and Construction of Small Diameter Piles for Road Bridges", *Indian Road Congress, New Delhi*.
32. IRC SP 113. "Guidelines on Flood Disaster Mitigation for Highway Engineers", *Indian Road Congress, New Delhi*.
33. IRC SP 116. "Guidelines for Design and Installation of Gabion Structures", *Indian Road Congress, New Delhi*.
34. MORTH manual. "Specifications for Road and Bridge Works", *Indian Road Congress, New Delhi*.
35. ISO 17745. "Steel Wire Ring Net Panels Definitions and Specifications", *International Organisation for Standard, UK*.
36. ISO 17746. "Steel Wire Rope Net Panels and Rolls-Definitions and Specifications", *International Organisation for Standard, UK*.
37. BS 8006-1. "Code of practice for strengthened/reinforced soils and other fills, *BS*.
38. BS 8006-2. "Code of Practice for Strengthened/Reinforced Soils Walls-Soil Nail Design", *BS*.
39. BS 8081. "Code of Practice for Ground Anchorages", *BS*.
40. BS EN 1537. "Execution of Special Geotechnical Works – Ground Anchors", *BS*.
41. BS EN 14199. "Execution of special geotechnical works-Micropiles", *BS*.

42. EN ISO 1461. "Hot Dip Galvanized Coatings on Fabricated Iron and Steel Articles-Specifications and Test Methods", *European Committee for Standardization, Brussels*.
43. EN ISO 14475. "Execution of Special Geotechnical Works-Reinforced fill", *European Committee for Standardization, Brussels*.
44. AASHTO manual. "LRFD Bridge Design Specifications", *American Association of State Highway and Transportation Officials*.
45. ASTM D5338. The Aerobic Biodegradability under Controlled Composting Condition, *American Association of State Highway and Transportation Officials*.
46. ASTM A 974 - 97 : Standard specification for welded wire fabric gabions and gabion mattress.
47. ASTM D 7332. "Standard Test Method for Determination of Erosion Control Product (ECP) Ability to Encourage Seed Germination and Plant Growth Under Bench-Scale Conditions".
48. ASTM D 7367. "Standard Test Method for Determining Water Holding Capacity of Fiber Mulches for Hydraulic Planting".
49. FHWA-IF-02-034. "Geotechnical Engineering-Evaluation of Soil and Rock Properties", *Federal Highway Administration, SW Washington*.
50. FHWA-IF-99-015. "Geotechnical Engineering-Ground Anchors and Anchored Systems" *Office of Bridge Technology, Federal Highway Administration, Washington, D.C.*
51. FHWA NHI-05-039. "Micropile Design and Construction", *National Highway Institute, Federal Highway Administration, Washington, D.C.*
52. FHWA-NHI-10-024 GEC 011-Vol I. "Design and Construction of Mechanically Stabilized Earth Walls and Reinforced Soil Slopes, *National Highway Institute, Federal Highway Administration, SW Washington*.
53. FHWA-NHI-10-025 GEC 011 – Vol II. "Design and Construction of Mechanically Stabilized Earth walls and Reinforced Soil Slopes", *volume 2, National Highway Institute, Federal Highway Administration, Washington, D.C.*
54. FHWA-NHI-14-007 GEC 007. "Soil Nail Walls-Reference Manual", *National Highway Institute, Federal Highway Administration, Washington, D.C.*
55. FHWA-CFL/TD-06-001. "Shored Mechanically Stabilized Earth (SMSE) Wall Systems Design Guidelines, Federal Highway Administration, Lakewood, CO.
56. FHWA-CFL/TD-11-002. "Context Sensitive Rock Slope Design Solutions", *Federal Highway Administration, Lakewood, CO.*
57. FHWA-NHI-HEC-23. Bridge Scour and Stream Instability Countermeasures, Experience, Selection and Design Guidance Volumes 1 and 2, *National Highway Institute, Federal Highway Administration, Washington, D.C.*
58. EAD-340020-00-0106. "Guideline for European Technical Approval of Falling Rock Protection Kits", *European Organisation for Technical Approvals, Brussels*.
59. Hong Kong Manual. Geotechnical Manual for Slopes. *Geotechnical Engineering Office, Hong Kong*.
60. CIRIA C637. "Soil Nailing-Best Practice Guide", *CIRIA, UK*.

61. UNI11167. "Structures for Rockfall Protection-Rockfall Embankments; Procedure Impact Test and Its Realization".
62. WA-RD 612.2, "Design Guidelines for Wire Mesh/Cable Net Slope Protection", WSDOT, Department of Transportation, Washington State.
63. EAD-340059-00-0106. "Falling Rock Protection Kits" European Assessment Document, European Organisation for Technical Approvals, Belgium.
64. UNI11211 Part-4. "Rockfall Protective Measures - Part 4: Definitive and Executive Design".
65. ONR 24810. A Comprehensive Guideline for Building Better Rockfall Protection Structures.
66. EAD 230005-00-0106. Wire Rope Net Panels.



# **Annexure-A1**

## **Steps to Use the Matrices**

Steps to use the matrices are given under two broad categories, namely, Investigation stage and Mitigation measure stage, as given below.

### **(A) INVESTIGATION STAGE**

The following step-by-step procedure should be followed.

#### **a) Site Inspection or Reconnaissance Survey (Table 2A)**

Reconnaissance survey is mandatory for designing the mitigations measures for the landslide prone area.

In hilly regions, there are many chronic landslide zones along road stretches, and many have developed in recent years which have disrupted the traffic. On receiving the report of any such event, the site engineer must visit the site for the reconnaissance survey.

During the Reconnaissance Survey, the following parameters shall be noted by visual inspection for planning and investigation purposes:

- A01 - Slope Mass Type
- A02 - Slope Height
- A03 - Slope Angle
- A04 - Source of Seepage
- A05 - Area of Affected Slope
- A06 - Other Instability Issues, if any
- A07 - RoW Restriction.

These parameters may be ticked by the site engineer in a Site Assessment Check-list Sheet similar to the one given in Annexure A6.

#### **b) Topographical Mapping (Table 2B)**

The output of topographic survey is a topographical contour plan along with the corresponding cross sections of the affected site. The topographic survey is done either by total station or Lidar survey (Digital or Infrared videography may also be sufficient for small heights). For the sites, where the slope height is more than 60 m or there is no accessibility for total station survey, the topographic survey shall be carried out by Drone (UAV) with or without Lidar. The topographic survey shall be done on the scale of 1:500 to 1:2000.

The information on slope geometry parameters, such as slope height and slope angle, gathered during the site inspection or reconnaissance survey is also verified from this survey.

#### **c) Geological Investigation (Table 2C)**

A geological investigation is the backbone of the investigation stage and shall be conducted by an experienced geologist. In this investigation, geological mapping of slope surface is done. The following parameters comprise the geological Investigation (Table 2C).

- C01 - Assessment of Slope by Analyzing the Google Earth Imagery
- C02 - Study of Physiography and Geomorphology
- C03 - Study of Regional Geology
- C04 - Site Specific Geology
- C05 - Determining the Causative Factors
- C06 - Slope Assessment (C06a/ C06b/ C06c)
  - Determination of strength parameters of affected slope mass
  - Determination of weathering characteristics of slope
  - Type of slope composition (i.e., Rock slope, Debris slope, Talus slope)
  - Type of Failure

C07 - Geological Mapping Incorporated with Joint Data

For Rock Slope, SMR class will be determined (refer Annexure A2). For weathering characteristics of slope, Annexure A3 may be referred. For Debris and Talus slopes, the determination of strength parameters of affected slope mass shall be done by back analysis (refer Annexure A4). These parameters will be used in the design of mitigation measures of the slope and evaluating its post mitigation stability. For the design of retaining structures, safe bearing capacity shall be evaluated as per codal provisions (refer Annexure A5).

#### **d) Hydrological / Meteorological Investigation (Table 2D)**

A hydrological / meteorological investigation shall be carried out for the slopes where the instability is due to toe erosion by river action (i.e., Code A06c). This Investigation shall be conducted for the determination of the following parameters.

- D01 - Determination of Catchment Area
- D02 - Determination of Peak Discharge
- D03 - Determination of HFL
- D04 - Analysis of Rainfall Data

Note that the rainfall data needs to be analyzed only for those areas that have annual rainfall greater than 3000 mm.

#### **e) Geophysical Investigation (Table 2E)**

A geophysical investigation majorly involves the following two types of tests.

- E01 - Seismic Refraction Test
- E02 - Electrical Resistivity Test

The seismic refraction test shall be conducted when no rock exposure is observed during geological investigation (i.e., case C04e) and on the recommendation of geologist. For the slopes, where seepage is observed during dry season, electrical resistivity test shall be conducted.

#### **f) Geotechnical Investigation (Table 2F)**

Geotechnical investigation involves field work, in situ tests and laboratory tests. Standard Penetration Test (IS: 2131-1981) shall be conducted on site. For laboratory tests, both disturbed and undisturbed samples shall be obtained from borehole

drilling. Various laboratory tests shall be conducted for determination of index and engineering properties.

Borehole drilling shall be performed at locations where geological investigations reveal that the depth of rock debris contact is more than 10 m. Borehole drilling shall also be conducted at sites where instability due to sinking is observed.

#### **g) Investigation Matrix**

The parameters related to site investigation (points b to f above) may be ticked by the site engineer in a Investigation Check-list sheet similar to the one given in Annexure-A6.

Based on a combination of site parameters observed during reconnaissance survey, site investigations to be performed at the site are given in the investigation matrix. Three investigation matrices are given, one each for rock slope, debris/soil slope and talus slope (Tables 3A, 3B and 3C).

### **(B) MITIGATION MEASURE STAGE**

This stage involves listing of site assessment parameters and determination of mitigation measures.

#### **a) Site Assessment Parameters**

Once the site investigation is completed as per the investigation matrix, the following parameters are listed that constitute site assessment.

- A01 - Slope Mass Type – It may be Debris, Rock and Talus Slope
- A02 - Slope Height
- A03 - Slope Angle
- A04 - Source of Seepage
- A06 - Other Instability Issues, if any
- A07 - RoW Restriction
- C - Geology

In case the slope mass type (Code A01) is rock, Geology (Code C) will be described by the following sub-parameters.

- C06a(i-v) – SMR class
- CO6a(I-V) – Weathering grade
- C06a( $\alpha$ - $\gamma$ ) – Type of failure

In case the slope mass type (Code A01) is Debris/Soil, Geology (Code C) will be described by the following sub-parameter.

- C06b(I-III) – Type of Slope composition

In case the slope mass type (Code A01) is Debris/Soil, Geology (Code C) will be described by the following sub-parameter.

- C04a-e – Rock Debris contact depth

#### **b) Determination of Mitigation Measures**

Four mitigation matrices are given, one each for rock slope, debris slope and talus slope and one for additional measures to curb instability issues (Tables 5A, 5B, 5C and 5D). For determination of mitigation measures, a relevant table (Tables 5A, 5B, 5C and 5D) shall be referred and based on the combination of site assessment

parameters, required elements of mitigation measures shall be chosen. Snapshots of some mitigation measures taken from Hill Road Manual are given in Annexure A7.

## Annexure-A2

### Slope Mass Rating (SMR)

To determine Slope Mass Rating (SMR) values, first Rock Mass Rating (RMR) is determined. Using RMR values, SMR values are then obtained.

#### a) Rock Mass Rating (RMR) Values

In Rock Mass Rating, the following six parameters are used to classify the rock mass.

1. Uni-axial Compressive Strength of Rock material
2. Rock Quality Designation
3. Spacing of discontinuities
4. Condition of discontinuities
5. Ground water condition
6. Orientation of discontinuities

The values of above parameters can be worked out based on Annexure B of IS 13365 (Part I).

#### b) Slope Mass Rating (SMR) Values

Slope Rock Mass Rating (SMR) is a method to assess the stability of natural and cut slopes. Slope mass rating (SMR) can be obtained based on IS: 13365, Part 3 as follows:

$$SMR = RMR_{basic} + (F_1 \times F_2 \times F_3) + F_4$$

$$RMR_{basic} = \sum \text{Parameters (I + II + III + IV + V)}$$

$$RMR = RMR_{basic} + \text{adjustment for joint orientation}$$

Factors F1, F2, F3 and F4 are determined as given in Tables A1 and A2. Slope Stability Classes as per SMR values are given in Table A3.

Slope mass rating is being used successfully for landslide zonation in rocky and hilly areas. Detailed studies should be carried out where SMR is less than 40 and life and property are in danger; and slopes should be stabilized accordingly. Otherwise, a safe cut slope angle should be determined to raise SMR to 60.

**Table A1. Slope Mass Rating Factors  $F_1$ ,  $F_2$  and  $F_3$  (IS 13365, Part 3)**

Case of Slope Failure		Very Favourable	Favourable	Fair	Unfavourable	Very Unfavourable
P T W	$ \alpha_j - \alpha_s $ $ \alpha_j - \alpha_s - 180^\circ $ $ \alpha_i - \alpha_s $	$>30^\circ$	$30 - 20^\circ$	$20 - 10^\circ$	$10 - 5^\circ$	$<5^\circ$
P/W/T	$F_1$	0.15	0.40	0.70	0.85	1.00
P W	$ \beta_j $ $ \beta_i $	$<20^\circ$	$20 - 30^\circ$	$30 - 35^\circ$	$35 - 45^\circ$	$>45^\circ$
P/W	$F_2$	0.15	0.40	0.70	0.85	1.00
T	$F_2$	1.0	1.0	1.0	1.0	1.0
P W	$ \beta_j - \beta_s $ $ \beta_i - \beta_s $	$>10^\circ$	$10 - 0^\circ$	$0^\circ$	$0 - (-10^\circ)$	$< -10^\circ$
T	$ \beta_j + \beta_s $	$<110^\circ$	$110 - 120^\circ$	$>120^\circ$	--	--
P/W/T	$F_3$	0	-6	-25	-50	-60

NOTATIONS: P - planar failure; T- toppling failure; W - wedge failure;  $\alpha_s$  - slope strike;  $\alpha_j$ - joint strike;  $\alpha_i$  - plunge direction of line of intersection;  $\beta_s$  - slope dip and  $\beta_j$  - joint dip (see Figure 17.1);  $\beta_i$  - plunge of line of intersection

**Table A2. Slope Mass Rating Factor  $F_4$  (IS 13365, Part 3)**

Method	Natural Slope	Pre-splitting	Smooth Blasting	Blasting or Mechanical	Deficient Blasting
F4	+15	+10	+8	0	-8

**Table A3. Slope Stability Classes as per SMR Values**

Class No.	V	IV	III	II	I
SMR Value	0 - 20	21 - 40	41 - 60	61 - 80	81 - 100
Rock Mass Description	Very bad	Bad	Normal	Good	Very good
Stability	Completely unstable	Unstable	Partially stable	Stable	Completely stable
Failures	Big planar or soil like or circular	Planar or big wedges	Planar along some joint and many wedges	Some block failure	No failure
Probability of Failure	0.9	0.6	0.4	0.2	0

## Annexure-A3

### Weathering Grades and Their Meaning

Rock mass classification in terms of weathering, state of fractures and strength is carried out as per IS: 4464 as given in Table A4.

**Table A4. Rock Mass Classification in Terms of Weathering**

Terms	Description	Grade
Fresh	No visible sign of rock material weathering; perhaps slight discoloration on major discontinuity surfaces.	I
Slightly Weathered	Discoloration indicates weathering of rock material and discontinuity surfaces. All the rock material may be discoloured by weathering.	II
Moderately Weathered	Less than half of the rock material is decomposed or disintegrated to a soil. Fresh or discolored rock is present either as a continuous framework or as corestones.	III
Highly Weathered	More than half of the rock material is decomposed or disintegrated to a soil. Fresh or discolored rock is present either as a discontinuous framework or as corestones	IV
Completely Weathered	All rock material is decomposed and / or disintegrated to soil. The original mass structure is still largely intact.	V
Residual Soil	All rock material is converted to soil. The mass structure and material fabric are destroyed. There is a large change in volume, but the soil has not been significantly transported.	VI

Note: As weathering grade VI is similar to soil, it is not dealt in the rock slope matrix (Table 5A). Separate matrix (Table 5B) is given for Debris/soil Slopes.

## **Annexure-A4**

### **Back-Analysis to Determine Strength Parameters**

Back-analysis can be carried out to determine soil parameters essential for stability analysis (i.e., cohesion, friction angle and pore water pressure) that can be used to design mitigation measures. Failure of slope indicates Factor of Safety = 1 at the time of failure. In back analysis, an iterative procedure is adopted wherein first some reasonable soil parameters are assumed as per engineering judgement and experience from the known site geometry, stratigraphy and ground water conditions. The soil parameters are then reduced until the failure is obtained with Factor of Safety = 1. The failure surface geometry and failure mechanism should also be accurately modelled. Recommendations of Turner and Schuster (1996) and WSDOT (2022) should be used for the back-analysis. For principles of back analysis and an example on back analysis, Stark et al. (2011) may be referred.

For slopes where the slides have occurred for the first time or slopes that had slides with low historical total deformation, the back analysis is more likely to give shear strength parameters closer to fully softened shear strength rather than the residual shear strength. Therefore, in such cases, laboratory shear strength testing to measure the residual shear strength should also be conducted and used in conjunction with the parameters determined by back-analysis for mitigation design purposes.

#### **References:**

- i. WSDOT (2022). Geotechnical Design Manual. Report Number M 46-03.16, Department of Transportation, Washington State.
- ii. Stark, T.D., Newman, E. J., de la Pena, G. and Hillebrandt, D. (2011). Fill Placement on Slopes Underlain by Franciscan Mélange. Journal of Geotechnical and Geoenvironmental Engineering, ASCE, Vol. 137, No. 3, pp. 263-272.
- iii. Turner, A. K. and Schuster, R. L., editors (1996). Landslides Investigation and Mitigation. Transportation Research Board, TRB Special Report 247, National Academy Press, Washington, DC, 673 pp.



## Annexure-A5

### Estimation of Safe Bearing Pressures

For preliminary design, safe bearing pressure of rock mass may be computed on the basis of the classification as per IS 12070-1987 (refer Table A5). Such values should be checked or treated with caution for final design.

**Table A5. Safe Bearing Pressure of Rock Mass Based on Classification (IS 12070-1987)**

MATERIAL	$q_{ns}$ ( t/m <sup>2</sup> )
Massive crystalline bedrock including granite, diorite, gneiss, trap rock	1 000
Foliated rocks such as schist or slate in sound condition	400
Bedded limestone in sound condition	400
Sedimentary rock, including hard shales and sandstones	250
Soft or broken bedrock ( excluding shale ), and soft limestone	100
Soft shale	40

Rock Mass Rating (RMR) may also be used to obtain net allowable bearing pressure as given below in Table A6. This bearing pressure will ensure settlement of raft foundation to be less than 12 mm. RMR to be used should be the average value within a depth below foundation level equal to width of foundation (refer IS 12070-1987).

**Table A6. Net Allowable Bearing Pressure of Rock Mass Based on RMR (IS 12070-1987)**

CLASSIFICATION No.	I	II	III	IV	V
Description of rock	Very good	good	Fair	Poor	Very Poor
R M R	100-81	80-61	60-41	40-21	20-0
$q_{ns}$ ( t/m <sup>2</sup> )	600-448	440-288	280-151	145-90-58	55-45-40

In the absence of soil test data, for preliminary design, the safe bearing capacity values for different soils given in Table A7 may be adopted (refer IS 14458 – Part 2: 1997).

**Table A7. Safe Bearing Capacity Values for Different Soils (IS 14458 Part 2: 1997)**

Type of Bearing Material	Symbol	Consistency of Place	Recommended Value of Safe Bearing Capacity (t/m <sup>2</sup> )
(1)	(2)	(3)	(4)
Well graded mixture of fine and coarse-grained soil, glacial till, hard pan, boulder clay	GW-GC, GC, SC	Very compact	100
Gravel, gravel-sand mixtures, boulder-gravel mixtures	GW, GP, SW, SP	Very compact	80
		Medium to compact	60
		Loose	40
Coarse to medium sand, sand with little gravel	SW, SP	Very compact	40
		Medium to compact	30
		Loose	30
Fine to medium sand, silty or clayey medium to coarse sand	SW, SM, SC	Very compact	30
		Medium to compact	25
		Loose	15
Fine sand, silty or clayey medium to fine sand	SP, SM, SC	Very compact	30
		Medium to compact	20
		Loose	15
Homogeneous inorganic clay, sandy or silty clay	CL, CH	Very stiff to hard	40
		Medium to stiff	20
		Soft	5
Inorganic silt, sandy or clayey silt, varied silt-clay-fine sand	ML, MH	Very stiff to hard	30
		Medium to stiff	15
		Soft	5

The shear strength parameters, cohesion and angle of internal friction, should be determined by experiments. However, for preliminary design, the values given in Table A8 can be used (refer IS 14458 Part 2: 1997).

**Table A8. Typical Shear Strength Characteristics of Soil (IS 14458 Part 2: 1997)**

Group Symbol	c (Cohesion of Soil) (t/m <sup>2</sup> )		Φ' (Effective Stress Envelope) (degrees)
(1)	(2)	(3)	(4)
GW	0	0	> 38
GP	0	0	> 37
GM	—	—	> 34
GC	—	—	> 31
SW	0	0	38
SP	0	0	37
SM	0.5	0.2	34
SM-SC	0.5	0.15	33
SC	0.75	0.1	31
ML	0.7	0.1	32
ML-CL	0.65	0.2	32
CL	0.9	0.15	28
MH	0.75	0.21	25
CH	1.0	0.1	19

## Annexure-A6

### Check-Lists for Use in the Field During Mitigation and Design Stages

A Site Assessment check-list prepared for use in the field by site engineer and later during Site Investigation stage is given in Table A9.

**Table A9. Site Assessment Checklist for Field Use**

A01 SLOPE MASS TYPE	A01a SLOPE	-	ROCK	<input checked="" type="checkbox"/>	A01b - DEBRIS/SOIL SLOPE	<input type="checkbox"/>	A01c - TALUS SLOPE	<input type="checkbox"/>		
A02 SLOPE HEIGHT	A02a < 60 M	<input checked="" type="checkbox"/>	A02b 60 M TO 100 M	<input type="checkbox"/>	A02c > 100 M	<input type="checkbox"/>				
A03 SLOPE ANGLE	A03a < 30°	<input type="checkbox"/>	A03b 30° - 45°	<input checked="" type="checkbox"/>	A03c 45° - 60°	<input checked="" type="checkbox"/>	A03d 60° - 75°	<input type="checkbox"/>	A03e >75°	<input type="checkbox"/>
A04 SOURCE OF WATER FLOW	A04a NATURAL NALA	<input type="checkbox"/>	A04b SEEPAGE THROUGH SLOPE (DRY SEASON)	<input type="checkbox"/>						
A06 OTHER INSTABILITY ISSUES A06a SINKING <input type="checkbox"/>	A06b SHOOTING STONE <input type="checkbox"/>	A06c TOE EROSION DUE TO RIVER ACTION <input type="checkbox"/>	A06d ROAD WIDENING <input type="checkbox"/>	A06e UNPLANNED MUCK DISPOSAL <input type="checkbox"/>	A06f WASHED OUT ROAD (EMERGENCY)	A06g AVALANCHE <input type="checkbox"/>				

					WORKS) <input type="checkbox"/>	
--	--	--	--	--	------------------------------------	--

A07 ROW RESTRICTION (IF ANY)	A07a ROW RESTRICTION DUE TO VILLAGE ON HILL SIDE VICINITY	<input type="checkbox"/>	A07b ROW RESTRICTION DUE TO FOREST LAND ON HILL SIDE VICINITY	<input type="checkbox"/>
---------------------------------------	--	--------------------------	--	--------------------------

SLOPE MASS RATING (SMR)*	C06a (i) CLASS - I	<input type="checkbox"/>	C06a (ii) CLASS - II	<input type="checkbox"/>	C06a (iii) CLASS - III	<input checked="" type="checkbox"/>	C06a (iv) CLASS - IV	<input type="checkbox"/>	C06a (v) CLASS - V	<input type="checkbox"/>
--------------------------------	--------------------------	--------------------------	-------------------------------	--------------------------	---------------------------------	-------------------------------------	-------------------------------	--------------------------	-----------------------------	--------------------------

WEATHERING GRADE*	GRADE - W1	<input type="checkbox"/>	GRADE - W2	<input type="checkbox"/>	GRADE - W3	<input type="checkbox"/>	GRADE - W4	<input checked="" type="checkbox"/>	GRADE - W5	<input type="checkbox"/>
----------------------	---------------	--------------------------	---------------	--------------------------	---------------	--------------------------	---------------	-------------------------------------	---------------	--------------------------

TYPE OF FAILURE*	C06a (α) PLANAR FAILURE	<input checked="" type="checkbox"/>	C06a (β) WEDGE FAILURE	<input type="checkbox"/>	C06a (γ) TOPPLING FAILURE	<input type="checkbox"/>	C06b (α) CIRCULAR FAILURE	<input type="checkbox"/>	C06c (α) TRANSLATIONAL FAILURE	<input type="checkbox"/>
---------------------	-------------------------------	-------------------------------------	------------------------------	--------------------------	---------------------------------	--------------------------	---------------------------------	--------------------------	--------------------------------------	--------------------------

TYPE OF SLOPE COMPOSITION*	DEBRIS STRATA	<input type="checkbox"/>	RBM STRATA	<input type="checkbox"/>	GLACIOFLUVIAL STRATA	<input type="checkbox"/>
----------------------------------	------------------	--------------------------	---------------	--------------------------	-------------------------	--------------------------

## Annexure-A7

### Snapshots of different mitigation systems from Hill Road Manual (IRC: SP 48 2023)

A few snapshots of different mitigation systems taken from Hill road manual (IRC: SP 48 2023) are given in Figs. A1 to A13.

#### Secured Drapery System (Passive system):

- (i) Drapery systems will be a significant component of most of the protection, retention and prevention systems. Many times, their function will be to act as facia systems where prevention or retention is mainly done through long nails/anchors/bolts or surfaced nails/anchors/bolts. A typical example showing different types of products and their specification standards are given in Fig. 4.26

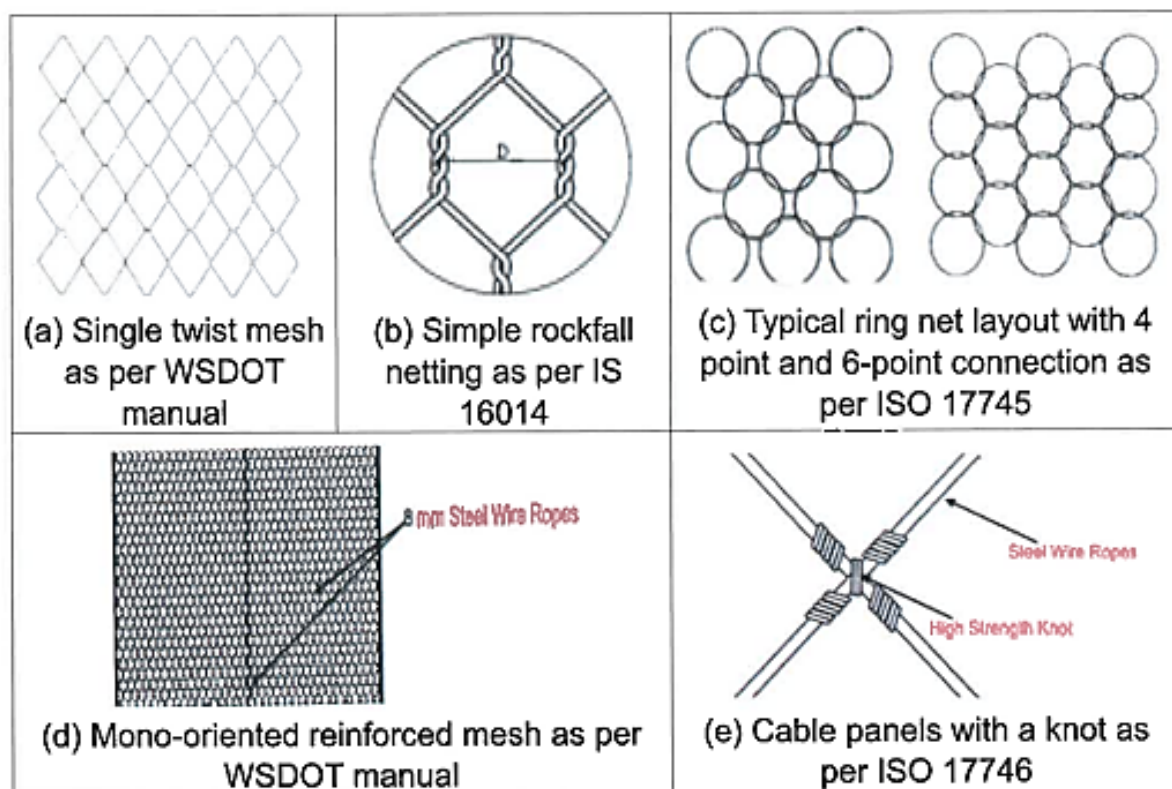
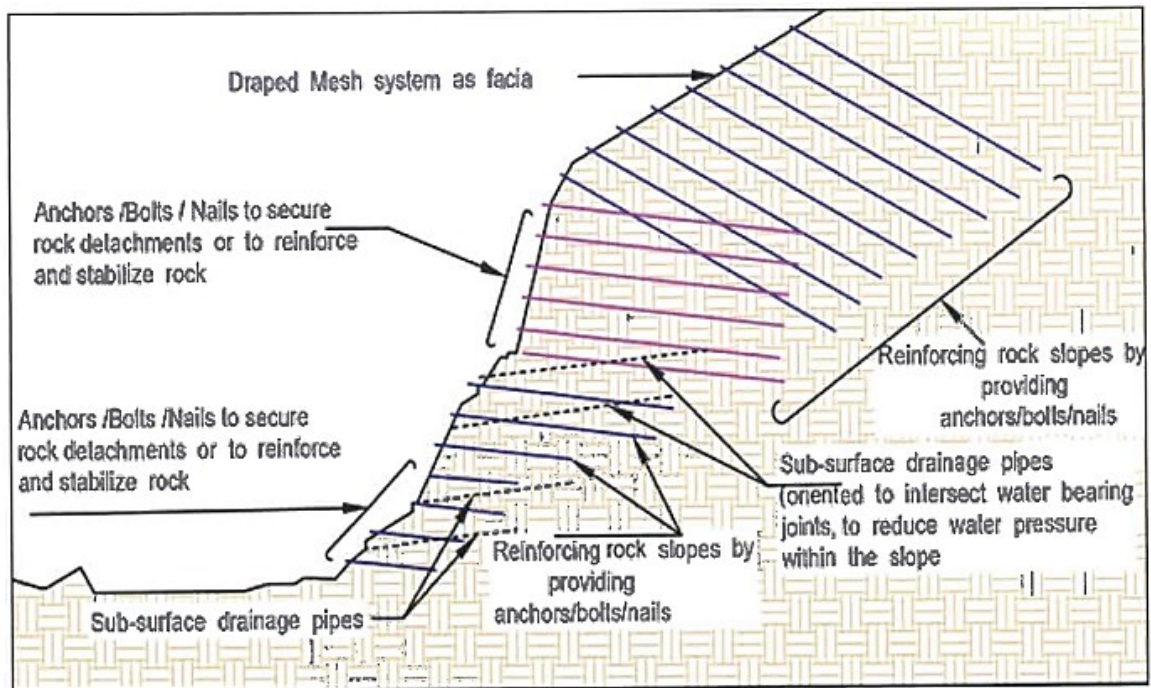
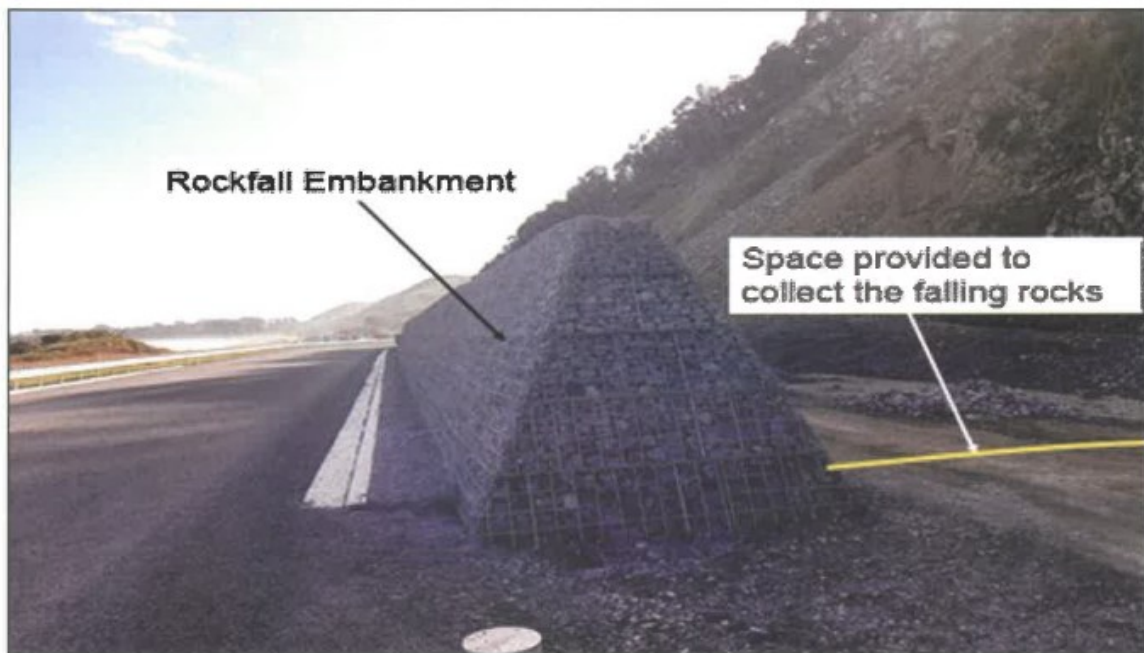


Figure A1. Examples of Types of Drapery Systems used for Rock fall Mitigation measures



**Figure A2. Typical Cross-section of Reinforcing Rock slope by Anchors/Bolts/Nails**



**Figure A3. Rockfall Embankment to protect infrastructure and roads at the foot of cliff**





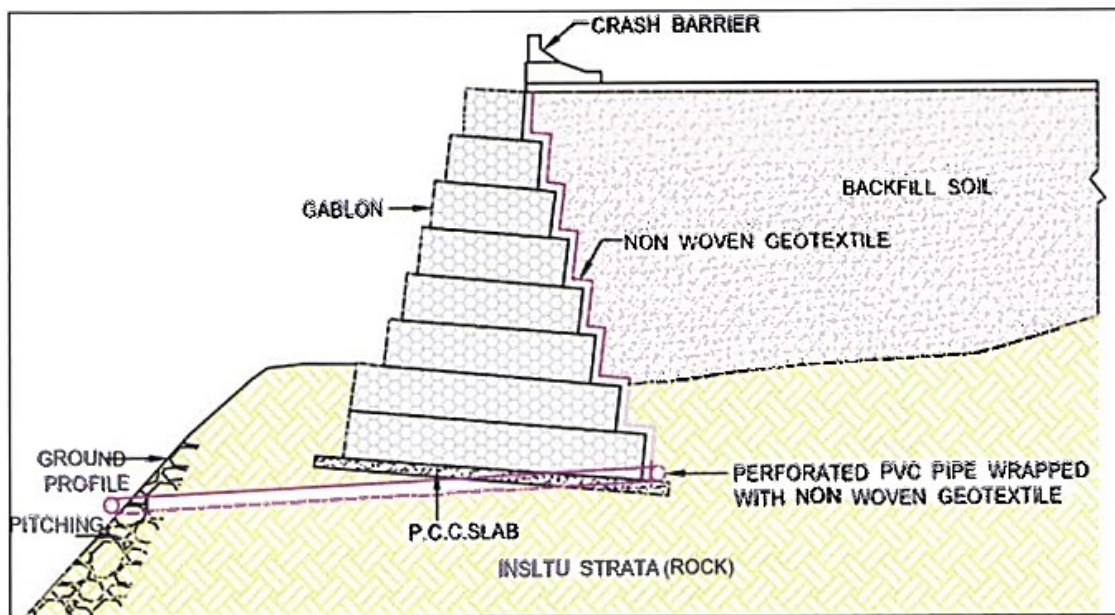
**Figure A4. Site Photograph of Rock Shed**



**Figure A5. Flexible Rockfall Barriers**

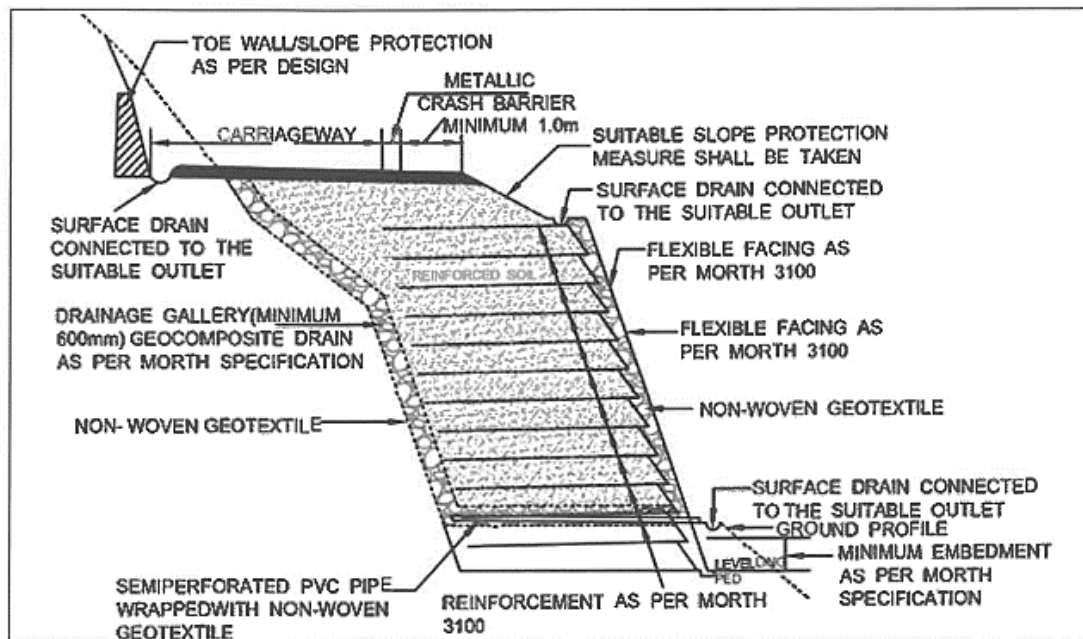


**Figure A6. Debris Flow Barrier**

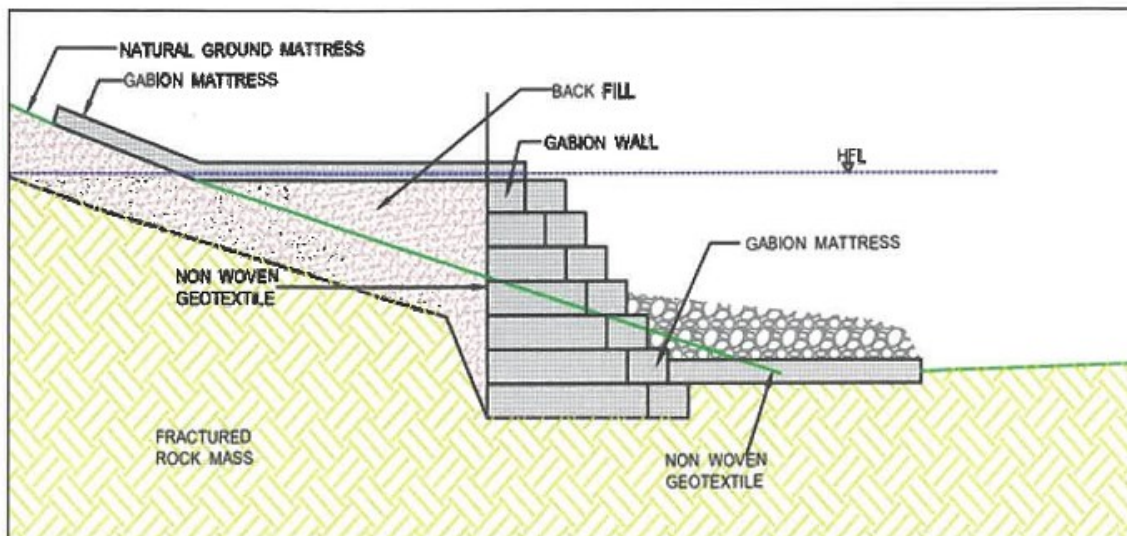


**Figure A7. Indicative Cross-section of Gabion Retaining Wall**





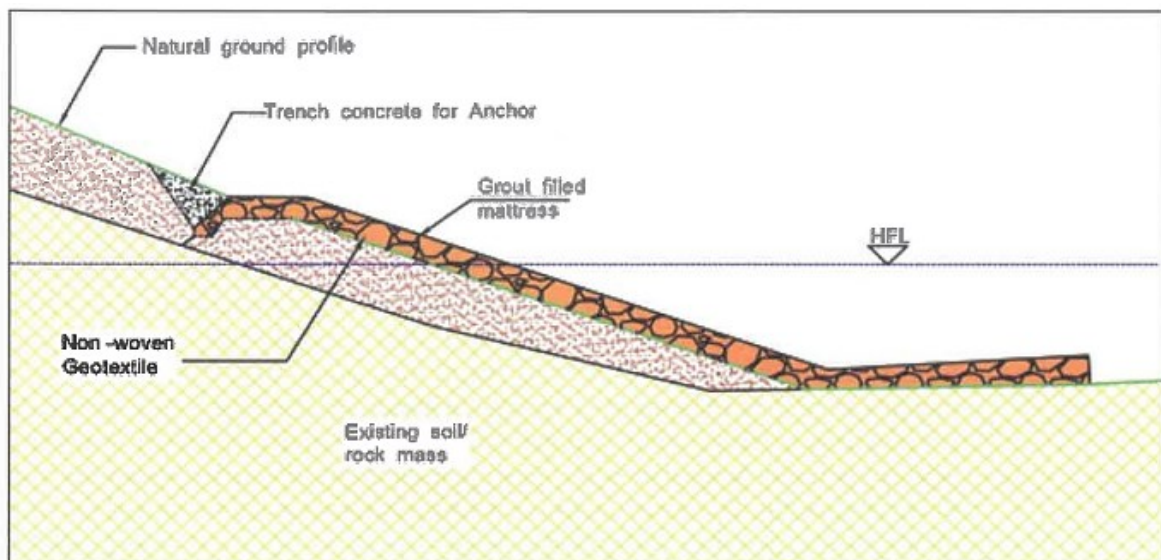
**Figure A8. Cross-section of Reinforced Soil Slope with Flexible Facing**



**Figure A9. Cross-section of Gabion Retaining Wall with Launching Apron on River Bed**



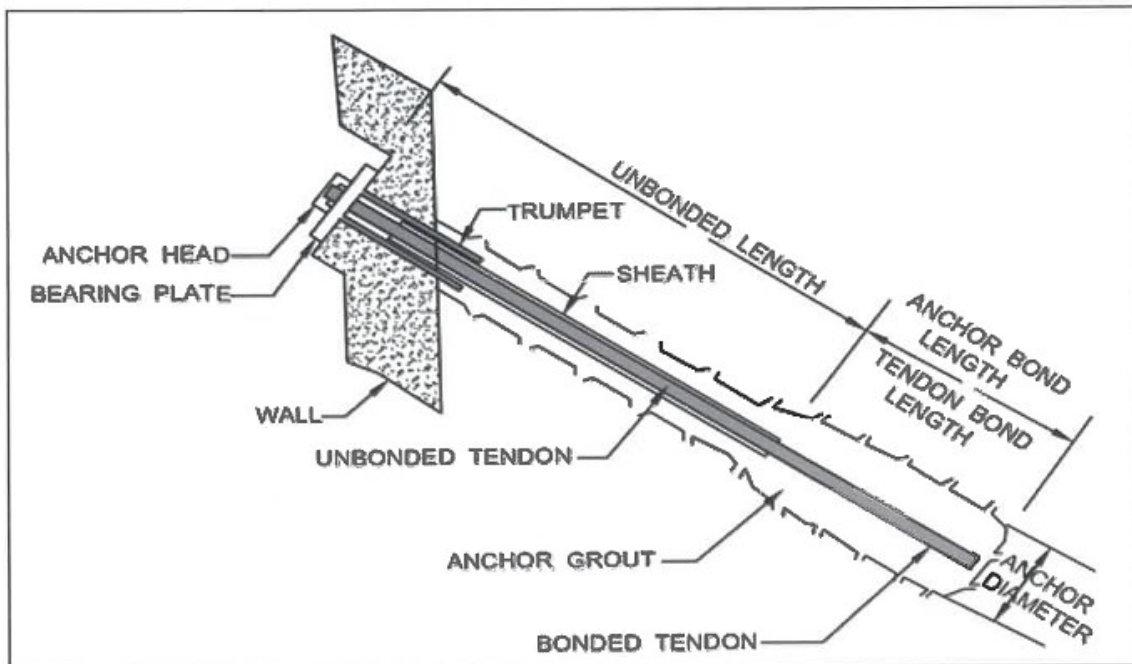
**Figure A10. Photograph of Gabion Retaining Wall with Launching Apron on River Bed**



**Figure A11. Cross-Section of Fabric Form Mattress with Launching Apron on River Bed**



**Figure A12. Photograph of Fabric Form Mattress with Launching Apron on River Bed**



**Figure A13. Typical Components of a Ground Anchor**



## Annexure-A8

### Approval of All Committee Members

Approvals of all committee members received through WhatsApp are given below.

