

**Most Immediate**

No. NH-15017/Sep/2022-DNT  
Government of India  
Ministry of Road Transport and Highways  
Transport Bhawan, 1, Parliament Street, New Delhi - 110001

---

Dated: 30<sup>th</sup> September, 2022

**Office Memorandum**

**Subject: -Updation in SOP and standard format for submission of proposals to NPG - reg**

**Ref: - OM No. NH-15017/14/2022-P&M dated 17<sup>th</sup> June, 2022**

**OM No. NH-15017/14/2022-P&M dated 25<sup>th</sup> August, 2022**

In continuation to this Ministry's OM's referred above, it is informed that there is an updation in the some provisions considering requirements of NPG, interministerial queries etc.

2. All the projects that are critical from multi-modal connectivity point of view, are Greenfield in nature with TPC > Rs. 500 cr. and are not under Bharatmala Pariyojana shall be presented to NPG for their consultation.

3. All the project proponents were requested to submit a presentation of the project, in the prescribed proforma and forward it to the Planning Zone for seeking convenience of the NPG along with the proposal template (Word Document) shared earlier.

4. Based on the recent discussions with DPIIT, the presentation template is updated with request for additional information related to corridor development (revised template given in **Annexure-1** for reference).

5. All the concerned stakeholders are required to take note of the template for creating presentation for inter-ministerial consultation from NPG along with Special Secretary Logistics (DPIIT). The presentation for inter-ministerial consultation shall help in providing bird's eye view of corridor development plan to all the NPG officers instead of the benefits of stretch under consideration.

6. Also, the additional informations required to be furnished is given in **Annexure-2**.

7. In addition, all the project alignments are also required to be uploaded on NMP Portal in .kml format before presenting the project to NPG members.

8. Project Proponents are requested to submit the presentation, alignment files and response to the TSU queries in desired timelines to include it in agenda of fortnightly NPG Meetings.

9. Also, the field officers across all the implementing agencies are requested to leverage NMP Portal for alignment preparation irrespective of its consideration for NPG consultation.

10. For any further assistance, Sh. Bidur Kant Jha, Director; [8826173057](tel:8826173057); email: [bidurkant.jha@gov.in](mailto:bidurkant.jha@gov.in), may also be contacted in this regard

Enclosure: As above

Yours sincerely,  
*Bidur Kant Jha*  
30/09/2022  
(Bidur Kant Jha)  
Director  
(New Technology)

To,

- i. The Principal Secretaries/ Secretaries of all States/UTs Public Works Department dealing with National Highways, other centrally sponsored schemes.
- ii. Director General (Border Roads), Seema Sadak Bhawan, Ring Road, New Delhi- 110 010.
- iii. The Chairperson, National Highways Authority of India, G-5&6, Sector-10, Dwarka, New Delhi - 110 075.
- iv. The Managing Director, National Highways Infrastructure Development Corporation Limited, PTI Building, Sansad Marg, New Delhi - 110 001.
- v. All Project Zone CEs of the Ministry and SE (BP&SP)
- vi. All ROs of the Ministry.

Copy to:

Director, NIC - with a request to upload on the Ministry's website under "What's New"

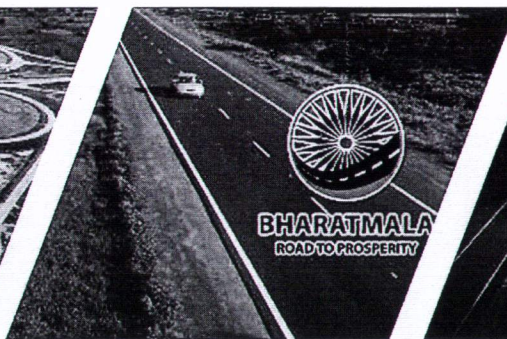
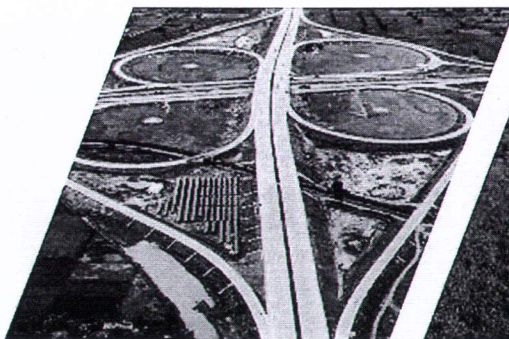
Copy for information to:

- i. Sr. PPS to Secretary (RT&H)
- ii. Sr. PPS to AS&FA
- iii. Sr. PPS to AS (H)
- iv. Sr. PPS / PPS / PS to ADG-Nodal / ADG (South)
- v. Sr. PPS to CE(Planning)
- vi. Sr. PPS / PPS / PS to JS (NHIDCL & Ropeways) / JS (Toll/RT&MVL) / JS (EAP & Coord) / JS (Logistics)
- vii.





सड़क परिवहन और राजमार्ग मंत्रालय  
Ministry of Road Transport and Highways



# <Corridor Name> Proposal for NPG Consultation

<Date>

**01**

## **Project Details**



<Corridor Name>

<States>

<Implementing Agency>

### Corridor Alignment

Corridor Alignment image to be placed  
from NMP (BISAG-N) Portal

#### Project Details

Project classification	<Greenfield / Brownfield>
Districts Covered	
Length (km)	
Civil Cost (Rs. Cr.)	
Total Project Cost (Rs. Cr.)	
End Lane Configuration	
Major Project features	
Traffic (in PCU)	FY2022-23 - FY2031-32 -

#### Project Stages

#### Target Date

Bid Invitation	
Award	
Appointed Date	
Completion	

## Importance of Corridor development

---

- ***Need of the Corridor Development:***

- *<Bullet points on why this new greenfield corridor is being developed>*
- *Corridor of which this stretch is sub-section - <Corridor Name (ignore if full corridor is considered)>*
- *Total Corridor Length – XX km*
- *Length under consideration in this project – YY km*
- *<Benefits of stretch Development (Improves Connectivity, Reduces congestion, reduces distance etc)>*
- *Improves Connectivity with XX PM GatiShakti Nodes and YY Tourist / Religious Places*



**<Corridor Name> alignment will provide connectivity with <xy> unique nodes identified under PM GatiShakti National Master Plan**

Synergy with PM GatiShakti	
Connectivity with National Master Plan Nodes	<ul style="list-style-type: none"> <li>– Defense Corridor: XX</li> <li>– Electronic Manufacturing Cluster: XX</li> <li>– Mega Food Park: XX</li> <li>– NICDIC Nodes: XX</li> <li>– Pharma &amp; Medical Clusters: XX</li> <li>– SEZ: XX</li> <li>– Textile Cluster: XX</li> </ul>
Connectivity with major economic centers	<ul style="list-style-type: none"> <li>– XX</li> </ul>
Connectivity with Social Points	<ul style="list-style-type: none"> <li>– Tourist Place: XX</li> <li>– Religious Places: XX</li> <li>– Aspirational / Tribal / LWE Affected districts: XX</li> </ul>
Planned Allied Infrastructure	<ul style="list-style-type: none"> <li>– Utility Corridor: <ul style="list-style-type: none"> <li>– Provision for OFC</li> <li>– Provision for Water Pipeline</li> <li>– Provision for Electrical Utility</li> </ul> </li> <li>– Solar Panel:</li> <li>– Way Side Amenities:</li> </ul>

**Construction of <corridor> will reduce time for travel by xx hrs. and will provide employment of yy person days**

Synergy with PM GatiShakti			
Connectivity with other infrastructure (Railway, Waterway, DFC, Airport etc)	<ul style="list-style-type: none"> <li>– Rail Connectivity (including Dedicated Freight Corridors) – XX</li> <li>– Airports – XX</li> <li>– MMLPs – XX</li> <li>– Ports / Inland Water Terminals – XX</li> </ul>		
Logistics Efficiency		Fuel Saving and Cost Reduction	Employment Generation
Impact on Logistics Efficiency	<ul style="list-style-type: none"> <li>– Length Reduction (XX km -&gt; YY km)</li> <li>– Avg. Speed XX to YY Kmph</li> <li>– Reduction in travel time from XX -&gt; YY Hrs</li> <li>– VOC Savings:</li> <li>– VOT Savings:</li> </ul>	<ul style="list-style-type: none"> <li>– ~XX Cr. Kg CO<sub>2</sub> reduction annually due to YY% reduction of travel length (~ZZ Cr Litre fuel savings annually)</li> </ul>	<ul style="list-style-type: none"> <li>– Direct &amp; Indirect employment of ~XX cr. person-days shall be generated</li> </ul>



In-order to develop the <corridor name> clearance from <Ministry/Authority> needs to be expedited

Pre-construction Activity	Total Requirement	Current Status		Completion Date (Target/ Actual)
Land Acquisition	– XX ha.	3A (in Ha)		
		3D (in Ha)		
		3G (in Ha)		
		Under possession (in Ha)		
		Linear length available		
Forest /Wildlife				
Environment				
Utility Shifting				
ROB/RUBs				
Canal Crossing				

Key Issues	
Central Level	
State Level	

## **02**

### **Intersection with other infrastructure**



## Intersection with other complementary infrastructure

Sr. No.	Intersecting Infrastructure	Status Update
1	National Highways	– Nos. and chainage of locations where stretch is intersecting
2	State Highways	– Nos. and chainage of locations where stretch is intersecting – Status Update on discussions / progress with intra / inter ministry for clearance
3	Railways	– Nos. and chainage of locations where stretch is intersecting – Status Update on discussions / progress with intra / inter ministry for clearance
4	Forest Area / Eco Sensitive Zone	– Nos. and chainage of locations where stretch is intersecting – Status Update on discussions / progress with intra / inter ministry for clearance
5	Water Bodies	– Nos. and chainage of locations where stretch is intersecting – Status Update on discussions / progress with intra / inter ministry for clearance
6	OFC Network	– Nos. and chainage of locations where stretch is intersecting – Status Update on discussions / progress with intra / inter ministry for clearance
7	HT Lines	– Nos. and chainage of locations where stretch is intersecting – Status Update on discussions / progress with intra / inter ministry for clearance



## Intersection with other NHs

---

Image from NMP Portal showing the intersection of alignment under study with other NHs  
Highlight intersections points on screenshot of the map



## Intersection with SH / MDR / OR

---

Image from NMP Portal showing the intersection of alignment under study with SH / MDR / OR  
Highlight intersections points on screenshot of the map

## Intersection with Railways

---

Image from NMP Portal showing the intersection of alignment under study with Railway network  
Highlight intersections points on screenshot of the map



## Intersection with power network / transmission lines

---

Image from NMP Portal showing the intersection of alignment under study with Power network  
Highlight intersections points on screenshot of the map

## Intersection with OFC network

---

Image from NMP Portal showing the intersection of alignment under study with OFC network  
Highlight intersections points on screenshot of the map



## Intersection with Forest Area and Eco Sensitive Zone

---

Image from NMP Portal showing the intersection of alignment under study with Forest Area / Eco Sensitive Zone

Highlight intersections points on screenshot of the map along with the area of intersection

## Connectivity to important industrial, economic, residential and tourism centers

---

Image from NMP Portal showing the connectivity of alignment under study with important industrial, economic, residential and tourism centers

Highlight intersections points on screenshot of the map



# THANK YOU



सड़क परिवहन और राजमार्ग मंत्रालय  
Ministry of Road Transport and Highways



## Annexure-2

1. Alignment Option Study/Route Selection Report/basis of the finalised alignment (more particularly in case of greenfield, why existing alignment was not adopted etc.). NH de-notification & maintenance till construction of existing alignment
2. Traffic diversion Analysis/Assigned Traffic for the greenfield alignment
3. Complementarity/Synergies with other infra-ministries i.e. provisions for other infra-ministries.
4. last mile connectivity/identified missing infra gaps
5. Interventions/Approval/Clearances required from different ministries of GOI and concern state government.
6. Is this project planning done through NMP Portal (Project submission for NPG should be planned on NMP portal)
7. Executive Summary of DPR (The Executive summary should clearly consist of techno financial assessment done by the proponent ministry)
8. Whether multimodality of the proposed project is in line with PM GatiShakti principles (Project proponent to clarify: how the project will qualify as a multi model infrastructure project)
9. Last Mile Connectivity of the proposed project (Project proponent to clarify: how this project covers last mile connectivity feature for passenger/ freight)
10. Integration with other existing/ planned infrastructure. (How this proposed project is being interlinked with other modes in the vicinity- like rail, road, ports, airports, inland waterways etc.)
11. Is this project facilitating the in and around economic nodes/ industrial or agricultural clusters (How this project is being connected to these nodes and clusters)
12. In the case of road projects; how the current traffic capacity (passenger and freight) is saturated and how this proposed project will create additional capacities.